

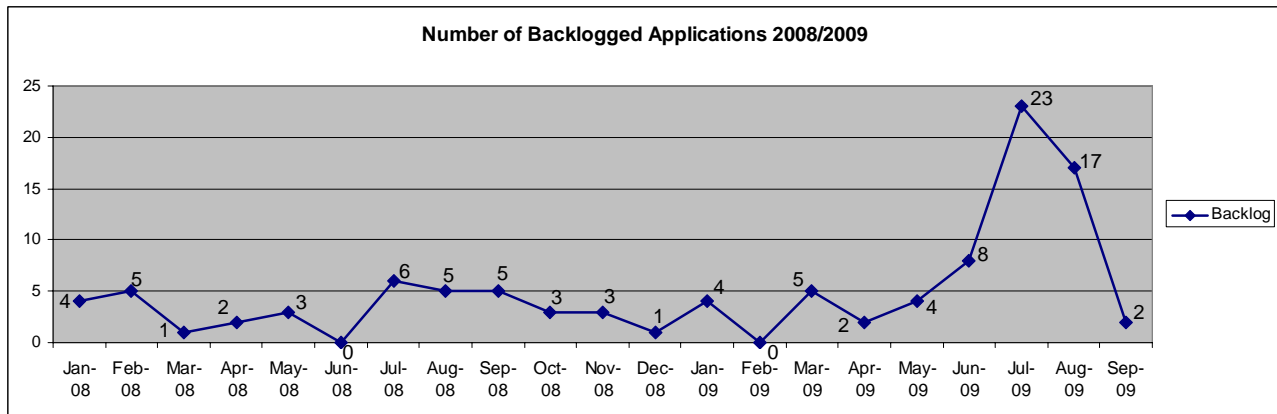


Project Fast Forward

SCORECARD REPORT FOR RESOURCE MANAGEMENT

SEPTEMBER 30, 2009

Backlog Monitoring Report for Resource Management



Details

Supervisory Comments: Resource Management reviews were on time or less than one week late **92.55%** of the time. In fact, in most of those cases, the reviews were only three or four days late. We had 2 backlog applications in September down from 17 in August.

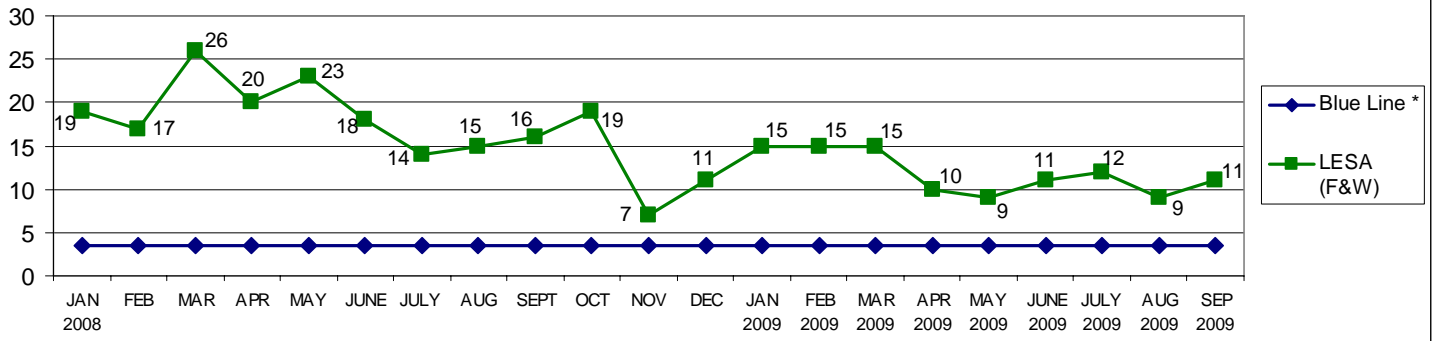
Efficiency Calculation:

- 94 Applications due in September
- 79 Applications on time
- 15 Applications late (2 of which are Backlog)

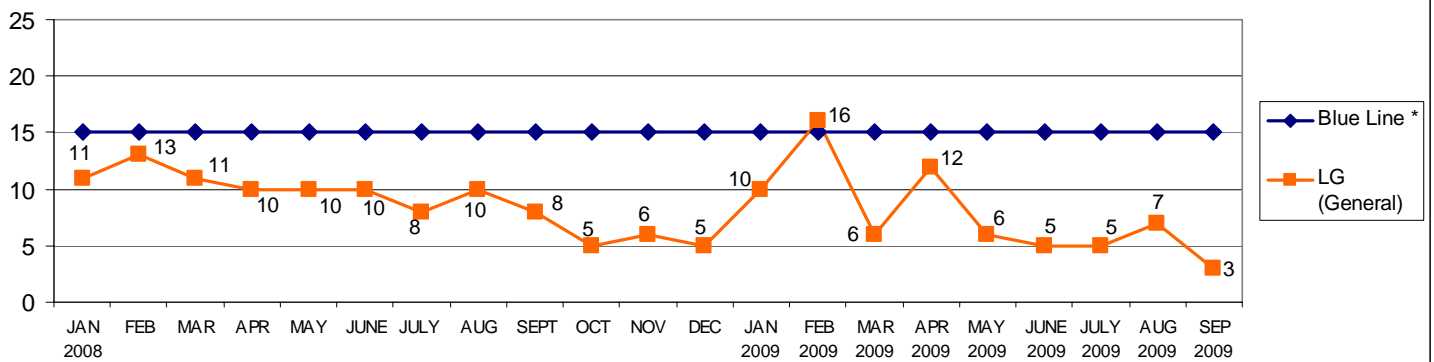
84.04% Efficiency

CATEGORIES		BACKLOG REPORT AS OF:											
		1/31/09	2/28/09	3/31/09	4/30/09	5/31/09	6/30/09	7/31/09	8/31/09	9/30/09	10/31/09	11/30/09	12/31/09
Backlogged Applications (number of applications with late reviews)	Appl. Review	4	0	0	0	4	8	23	17	2			
	Monitoring Rpts.	0	0	0	0	0	0	0	0	0			
	Forest Practice	0	0	0	0	0	0	0	0	0			
	Total Backlog	4	0	5	2	4	8	23	17	2			
Activity For Prior Month													
Number of Monitoring Reviews by Third Party		0	0	0	0	0	0	0	0	0	0	0	0
Dollars Expended for Third Party*		0	0	0	0	0	0	0	0	0	0	0	0
Number of Reviews by Other Means (assistance from other departments or sections)		0	0	0	0	0	0	0	0	0	0	0	0
Dollars Expended for Other Means*		0	0	0	0	0	0	0	0	0	0	0	0
Number of Backlog Reviews by Staff # of Reviewers 5 Biologists (performed during regular work day)		1	4	0	5	2	4	3	17	17	0	0	0
Number of Non-Contract Overtime Reviews by Staff		0	0	0	0	0	0	0	0	0	0	0	0
Number of Reviews by Extra Hire # of Reviewers N/A (performed during regular work day)		0	0	0	0	0	0	0	0	0	0	0	0
Dollars Expended for Extra Hire*		0	0	0	0	0	0	0	0	0	0	0	0
Notes: * Using Council Allocation													
Expedited Reviews													
Number Done Overtime Contract		0	1	0	0	0	1	2	3	1	0	0	0

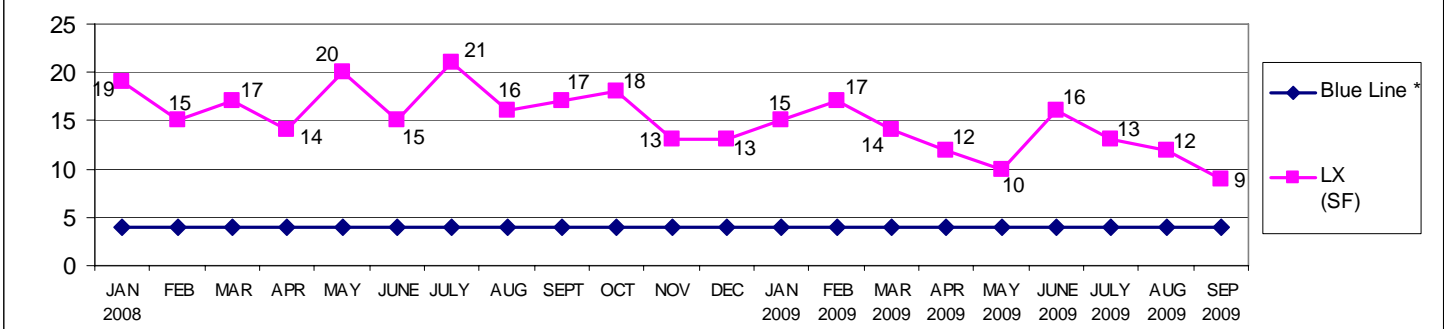
Fish and Wildlife Applications



General Applications



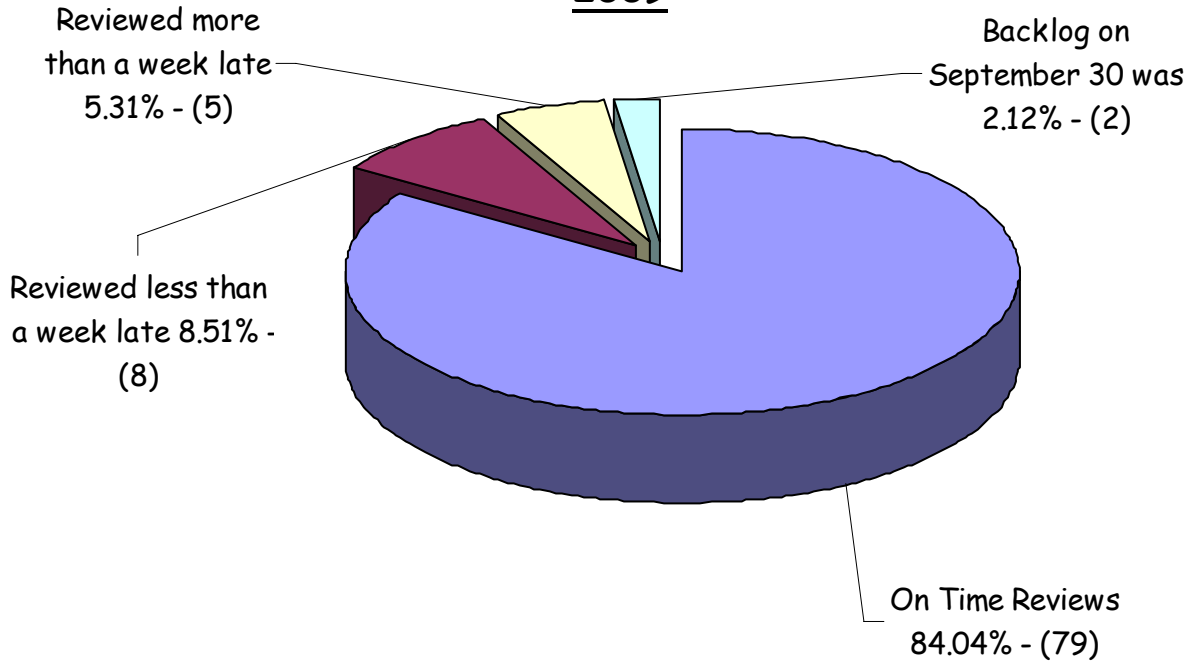
Single-Family Applications



* Blue Line = Number of applications that staff can process within review timelines (i.e. not go into backlog).

Resource Mgt Performance Review September

2009



Resource Management - September 2009			
	Due	On Time	Late
60 Days	74	66	8
30 Days	2	1	1
14 Days	18	12	6
Total	94	79	15

Efficiency Calculations - Resource Mgt. / January 2008 - September 2009

