

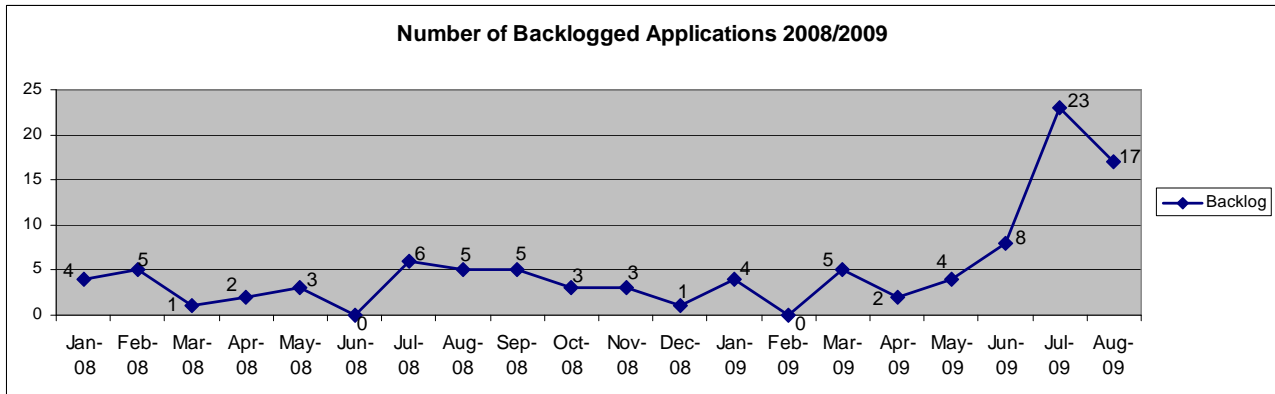


# Project Fast Forward

SCORECARD REPORT FOR RESOURCE MANAGEMENT

AUGUST 31, 2009

## Backlog Monitoring Report for Resource Management



### Details

**Supervisory Comments:** Resource Management reviews were on time or less than one week late **80.80%** of the time. In fact, in most of those cases, the reviews were only three or four days late. We had 17 backlog applications in August. We had 19 days of leave taken in August.

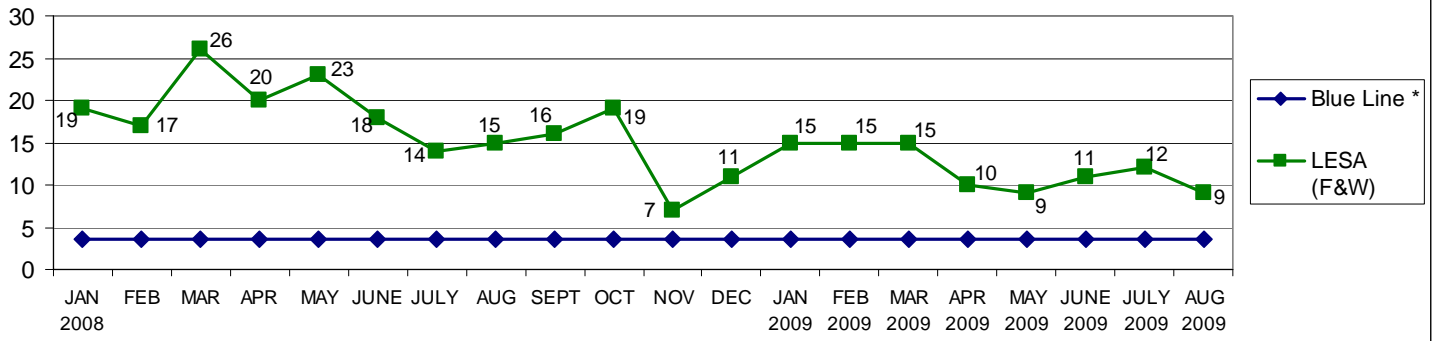
**Efficiency Calculation:**

- 125 Applications due in August
- 94 Applications on time
- 31 Applications late (17 of which are Backlog)

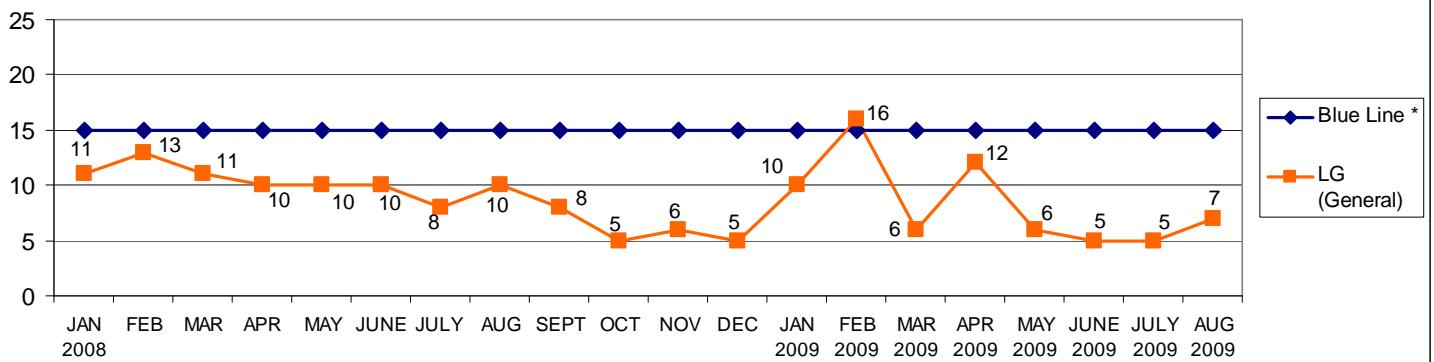
**75.20% Efficiency**

CATEGORIES		BACKLOG REPORT AS OF:											
		1/31/09	2/28/09	3/31/09	4/30/09	5/31/09	6/30/09	7/31/09	8/31/09	9/30/09	10/31/09	11/30/09	12/31/09
Backlogged Applications (number of applications with late reviews)	Appl. Review	4	0	0	0	4	8	23	17				
	Monitoring Rpts.	0	0	0	0	0	0	0	0				
	Forest Practice	0	0	0	0	0	0	0	0				
	<b>Total Backlog</b>	<b>4</b>	<b>0</b>	<b>5</b>	<b>2</b>	<b>4</b>	<b>8</b>	<b>23</b>	<b>17</b>				
<b>Activity For Prior Month</b>													
Number of Monitoring Reviews by Third Party		0	0	0	0	0	0	0	0	0	0	0	0
Dollars Expended for Third Party*		0	0	0	0	0	0	0	0	0	0	0	0
Number of Reviews by Other Means (assistance from other departments or sections)		0	0	0	0	0	0	0	0	0	0	0	0
Dollars Expended for Other Means*		0	0	0	0	0	0	0	0	0	0	0	0
Number of Backlog Reviews by Staff # of Reviewers 5 Biologists (performed during regular work day)		1	4	0	5	2	4	3	17	0	0	0	0
Number of Non-Contract Overtime Reviews by Staff		0	0	0	0	0	0	0	0	0	0	0	0
Number of Reviews by Extra Hire # of Reviewers N/A (performed during regular work day)		0	0	0	0	0	0	0	0	0	0	0	0
Dollars Expended for Extra Hire*		0	0	0	0	0	0	0	0	0	0	0	0
Notes: * Using Council Allocation													
Expedited Reviews													
Number Done Overtime Contract		0	1	0	0	0	1	2	3	0	0	0	0

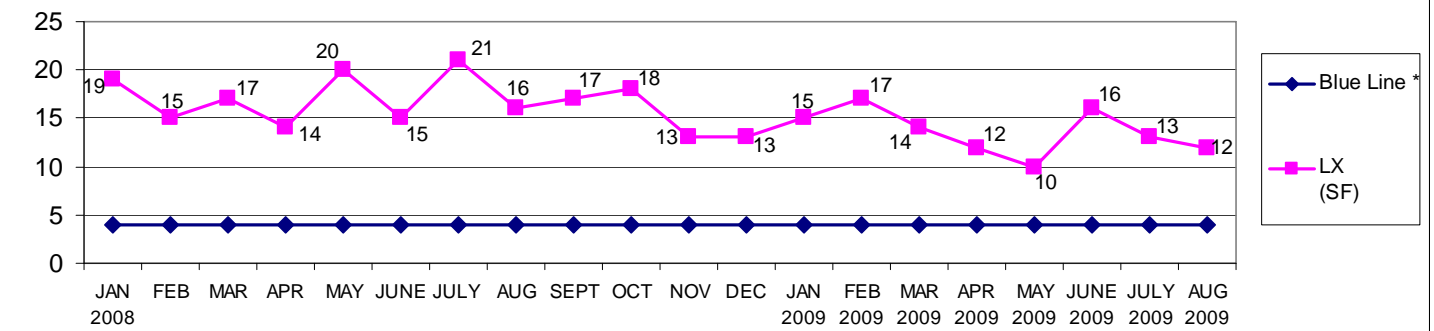
### Fish and Wildlife Applications



### General Applications

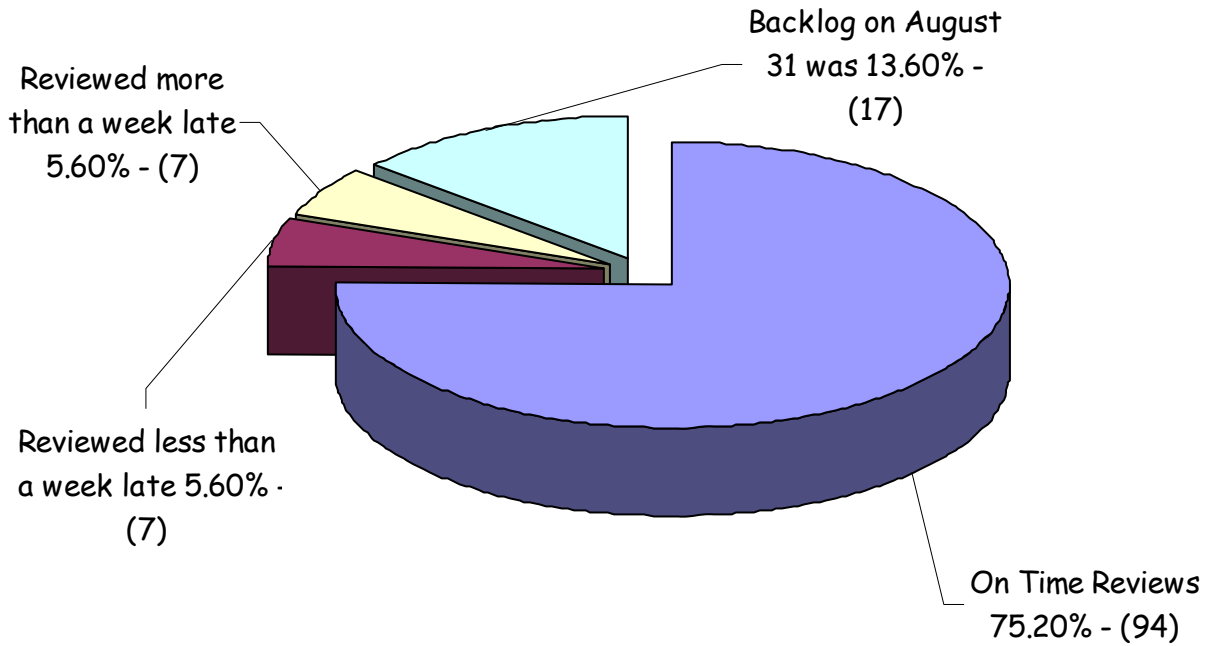


### Single-Family Applications



\* Blue Line = Number of applications that staff can process within review timelines (i.e. not go into backlog).

## Resource Mgt Performance Review August 2009



Resource Management - August 2009			
	Due	On Time	Late
60 Days	99	75	24
30 Days	7	6	1
14 Days	19	13	6
Total	125	94	31

### Efficiency Calculations - Resource Mgt. / January 2008 - August 2009

