

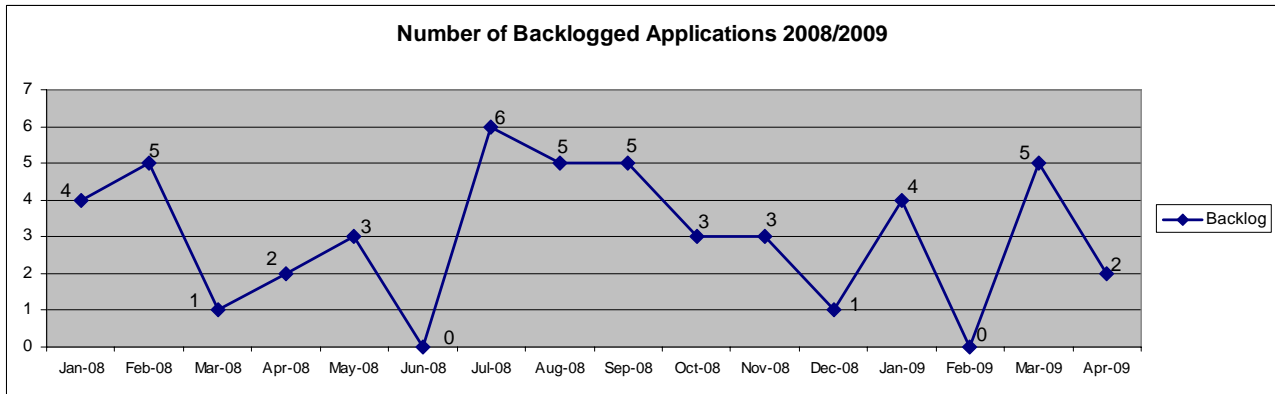


# Project Fast Forward

SCORECARD REPORT FOR RESOURCE MANAGEMENT

APRIL 30, 2009

## Backlog Monitoring Report for Resource Management



### Details

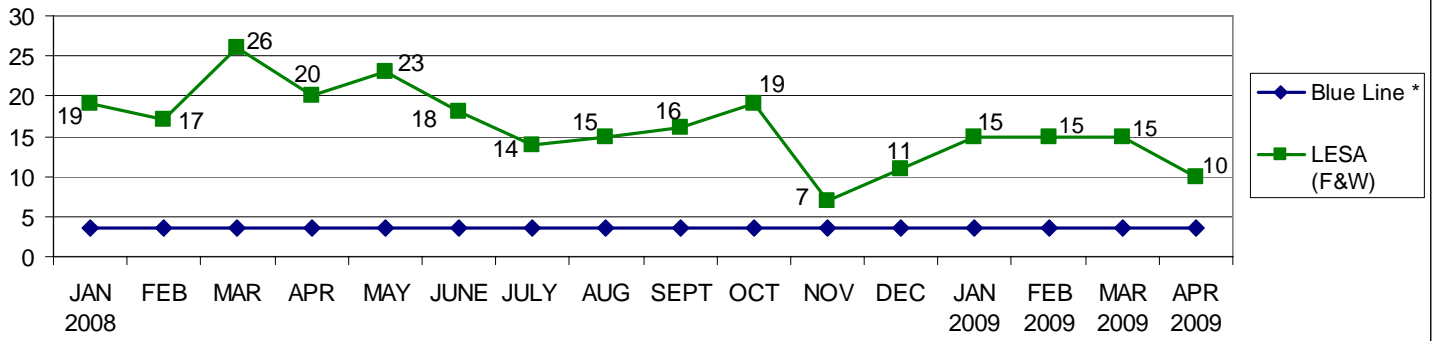
**Supervisory Comments:** Resource Management reviews were on time or less than one week late **95.04%** of the time. In fact, in most of those cases, the reviews were only three or four days late. We had 2 applications that became backlog in April.

**Efficiency Calculation:**

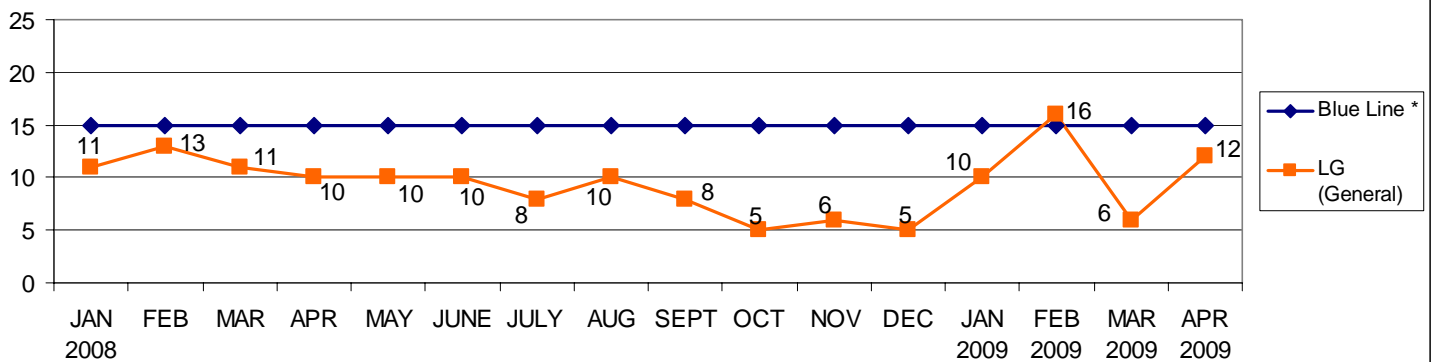
- 101 Applications due in April
- 82 Applications on time
- 19 Applications late (2 of which are Backlog)
- 81.18% Efficiency**

CATEGORIES		BACKLOG REPORT AS OF:											
		1/31/09	2/28/09	3/31/09	4/30/09	5/31/09	6/30/09	7/31/09	8/31/09	9/30/09	10/31/09	11/30/09	12/31/09
Backlogged Applications (number of applications with late reviews)	Appl. Review	4	0	0	0	0							
	Monitoring Rpts.	0	0	0	0	0							
	Forest Practice	0	0	0	0	0							
	<b>Total Backlog</b>	<b>4</b>	<b>0</b>	<b>5</b>	<b>5</b>	<b>2</b>							
<b>Activity For Prior Month</b>													
Number of Monitoring Reviews by Third Party		0	0	0	0	0	0	0	0	0	0	0	0
Dollars Expended for Third Party*		0	0	0	0	0	0	0	0	0	0	0	0
Number of Reviews by Other Means (assistance from other departments or sections)		0	0	0	0	0	0	0	0	0	0	0	0
Dollars Expended for Other Means*		0	0	0	0	0	0	0	0	0	0	0	0
Number of Backlog Reviews by Staff # of Reviewers 5 Biologists (performed during regular work day)		1	4	0	5	0	0	0	0	0	0	0	0
Number of Non-Contract Overtime Reviews by Staff		0	0	0	0	0	0	0	0	0	0	0	0
Number of Reviews by Extra Hire # of Reviewers N/A (performed during regular work day)		0	0	0	0	0	0	0	0	0	0	0	0
Dollars Expended for Extra Hire*		0	0	0	0	0	0	0	0	0	0	0	0
Notes: * Using Council Allocation													
Expedited Reviews													
Number Done Overtime Contract		0	1	0	0	0	0	0	0	0	0	0	0

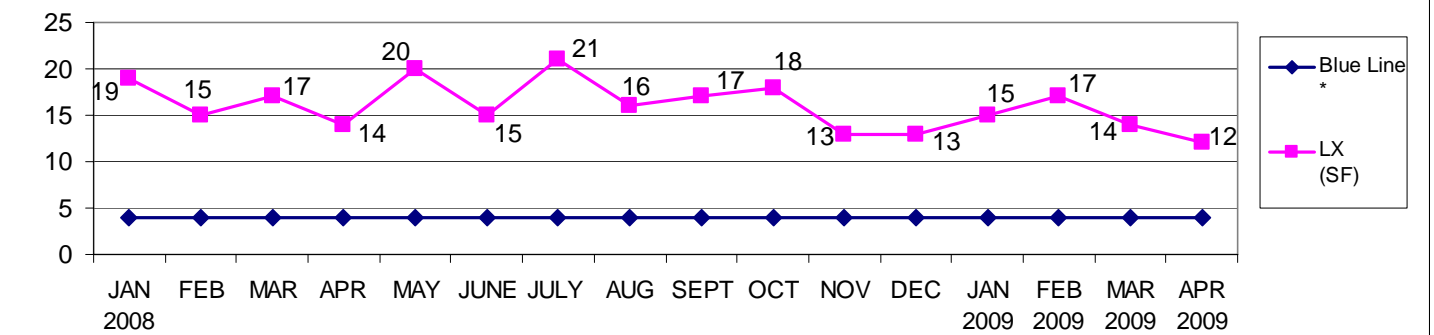
### Fish and Wildlife Applications



### General Applications

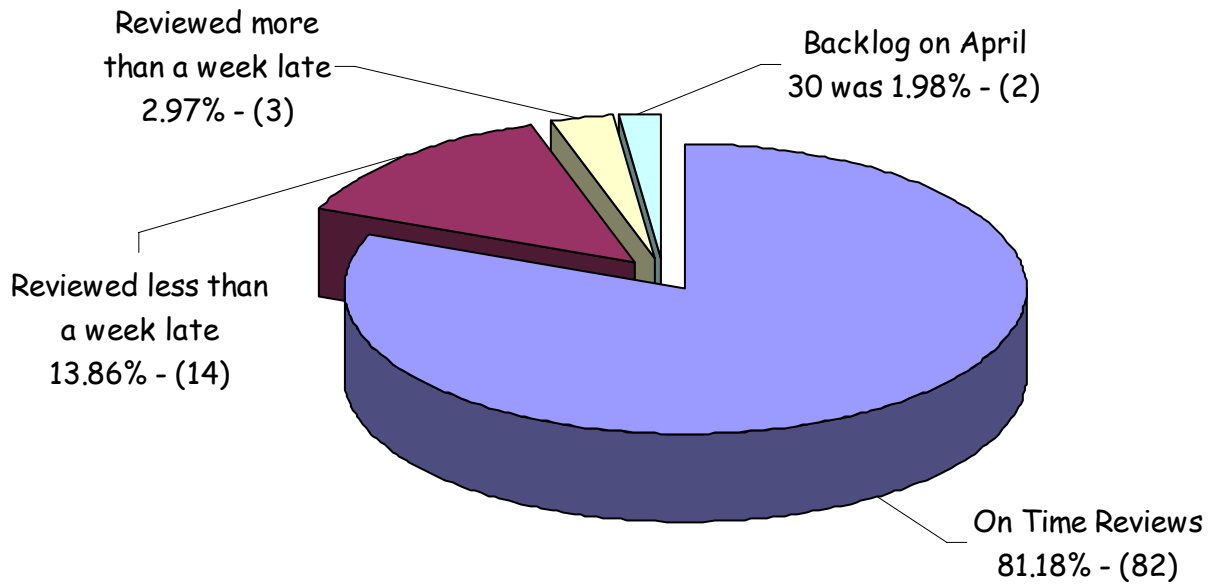


### Single-Family Applications



\* Blue Line = Number of applications that staff can process within review timelines (i.e. not go into backlog).

## Resource Mgt Performance Review April 2009



Resource Management - April 2009			
	Due	On Time	Late
60 Days	81	67	14
30 Days	9	7	2
14 Days	11	8	3
Total	101	82	19

### Efficiency Calculations - Resource Mgt. / January 2008 - April 2009

