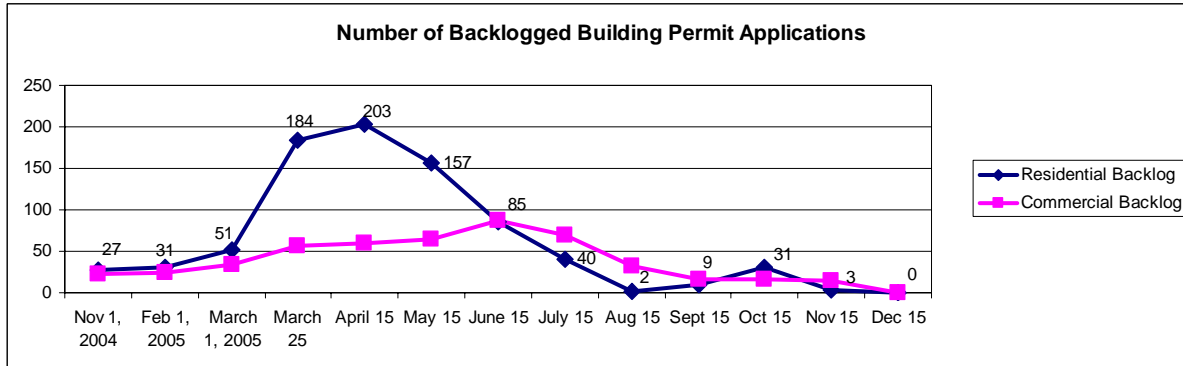




## Backlog Monitoring Report for Building Division Mike Noot, Plans Examiner Supervisor

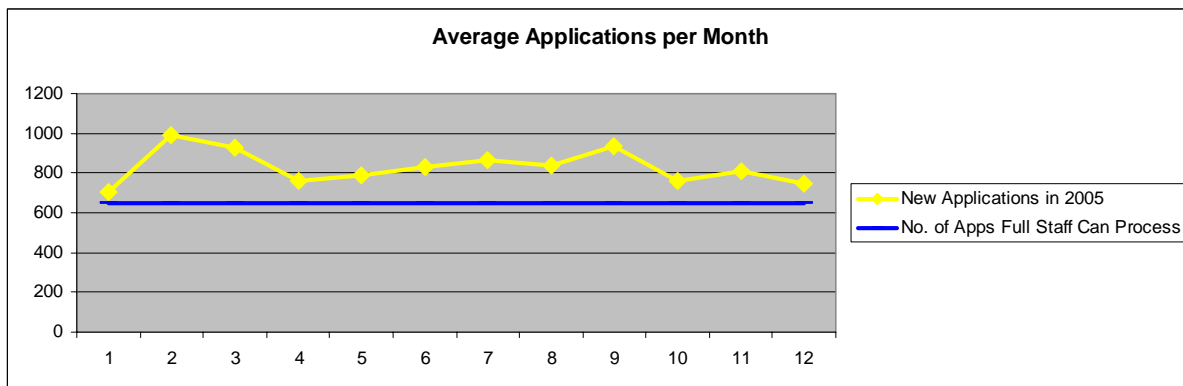


Residential and commercial backlog was reduced to zero applications.

### Backlog and Outsource Monitoring

#### **Consultant:**

Commercial: Kolke Consulting Group continues to make reviews within the set time frame. They completed review of 4 projects with multiple buildings in the month of December.



This chart shows the number of applications per month for 2005. It represents new building permit applications taken in by PALS. Volumes above 650 new applications may require additional resources to maintain turn around times.

**Fund Allocation in 2005**

Consultants	\$109,667
Overtime	\$ 8,023
Extra-Hire	<u>\$ 25,637</u>
Total	\$143,327

**Division Performance Standard Report** (days are calendar days)

<b>Building Division</b>	<u>Target for 1<sup>st</sup> Review</u>	<u>% Completed on Time</u>	<u>- Target</u>
Residential	14 Days	90%	90%
Commercial	28 Days	42 %	90%
<u>Target for Subsequent Reviews - % Completed on Time - Target<sup>1</sup></u>			
Residential	4 days	95 %	90%
Commercial	7 days	95 %	90%

**PALS Plus Report "Days to First Review"**

Number of commercial applications submitted in December '05	34
Number of applications with an initial review	17
Average number of days to first review	11 <sup>2</sup>
Number of residential applications submitted in December '05	416
Number of applications with an initial review	349
Average number of days to first review	3 <sup>2</sup>

---

<sup>1</sup> The data for subsequent reviews is based on the supervisors review of work and not on a PALS Plus report. A report is being developed.

<sup>2</sup> The low number of days to first review includes all types of applications. Fences, decks, docks, sheds, and garages are included