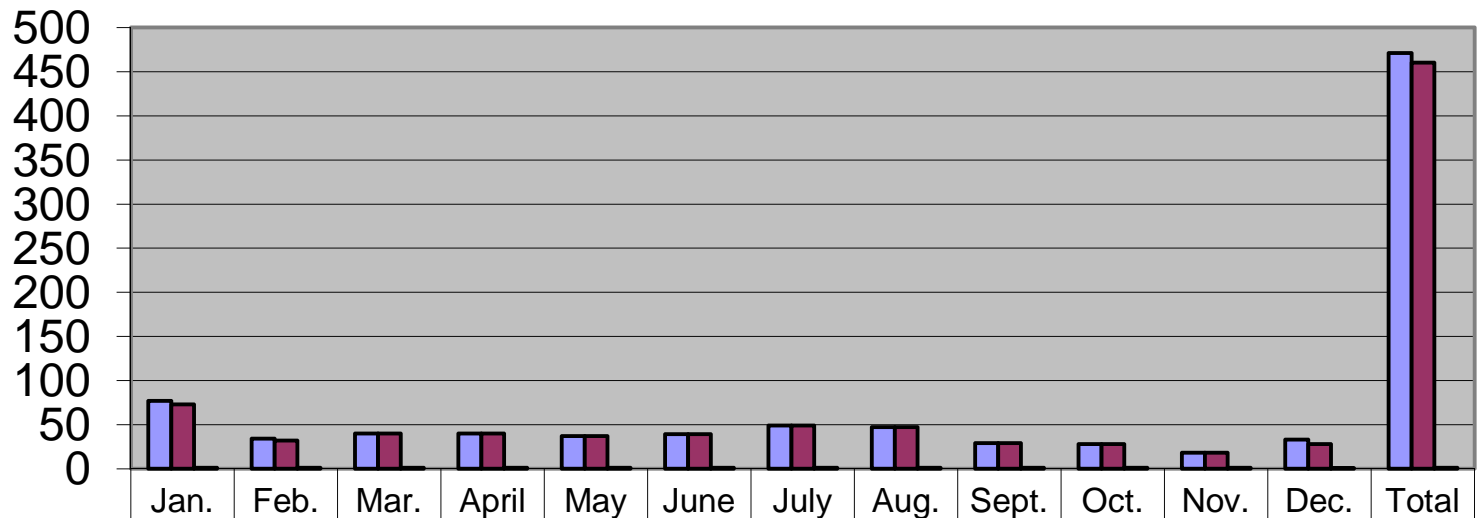


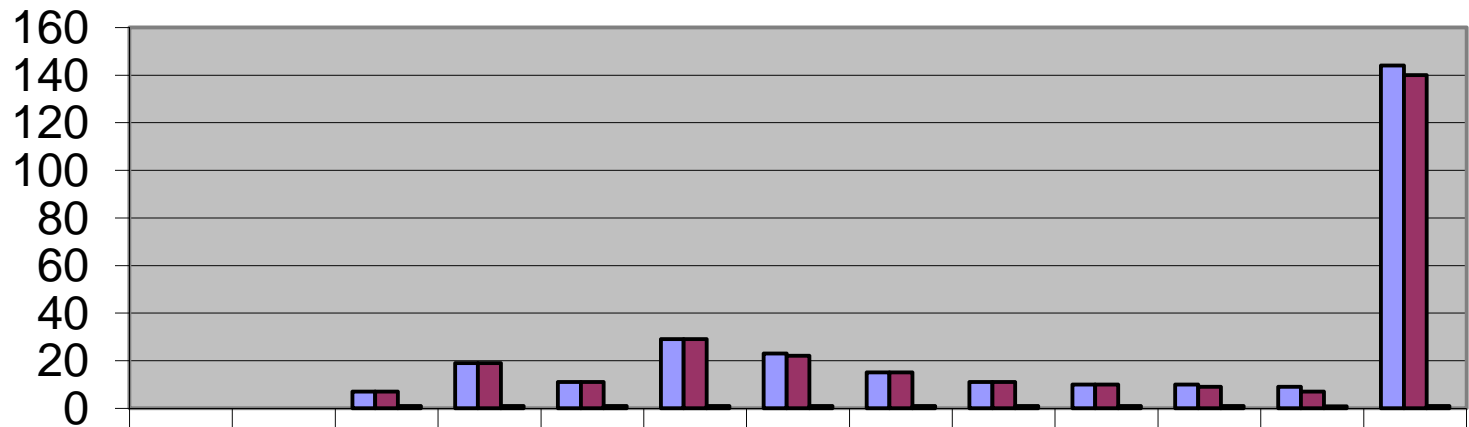
## Performance Measures for Code Enforcement 2008



	Jan.	Feb.	Mar.	April	May	June	July	Aug.	Sept.	Oct.	Nov.	Dec.	Total
■ New Cases	77	34	40	40	37	39	49	47	29	28	18	33	471
■ Insp. within 12 days	73	32	40	40	37	39	49	47	29	28	18	28	460
■ % of Goal	95%	94%	100%	100%	100%	100%	100%	100%	100%	100%	100%	85%	98%

■ New Cases    
 ■ Insp. within 12 days    
 ■ % of Goal

## Performance Measures for Wetland Violations 2008



	Jan.	Feb.	Mar.	April	May	June	July	Aug.	Sep.	Oct.	Nov.	Dec.	Total
■ Inspections	0	0	7	19	11	29	23	15	11	10	10	9	144
■ Visit within 5 days	0	0	7	19	11	29	22	15	11	10	9	7	140
■ % of Goal	0%	0%	100%	100%	100%	100%	96%	100%	100%	100%	90%	78%	97%

■ Inspections   
 ■ Visit within 5 days   
 ■ % of Goal