



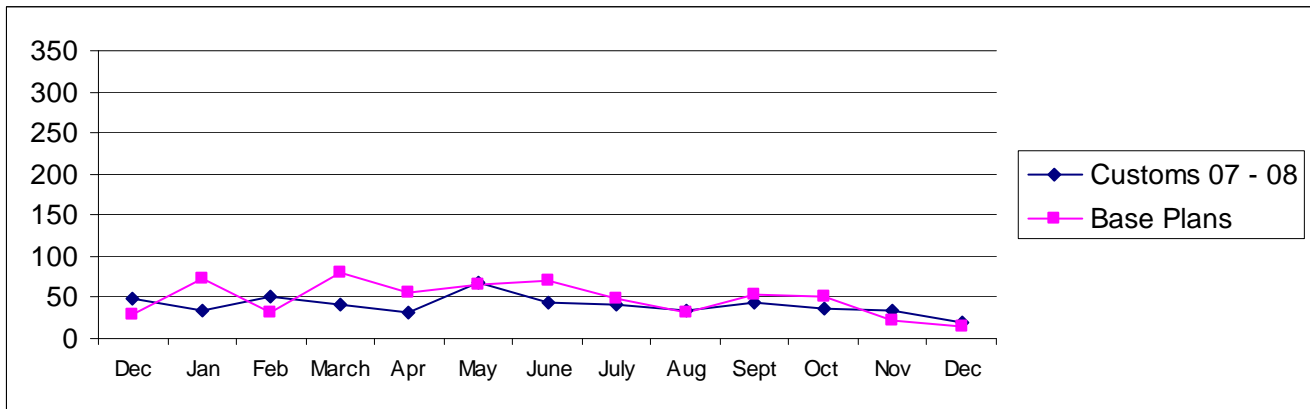
Pierce County

Building Division's Mini-Scorecard December 2008

Gordon L Aleshire, Building Official
253-798-2753 galeshi@co.pierce.wa.us
Sherry Hulin, Supervising Administrative Assistant
253-798-3152 shulin@co.pierce.wa.us

Steve Widener, Building Inspector Supervisor
253-798-7396 swidene@co.pierce.wa.us
Mike Noot, Plans Examiner Supervisor
253-798-7218 mnoot@co.pierce.wa.us

Issued Permits: Comparison of Custom Homes & Base Plans and Townhouse Units

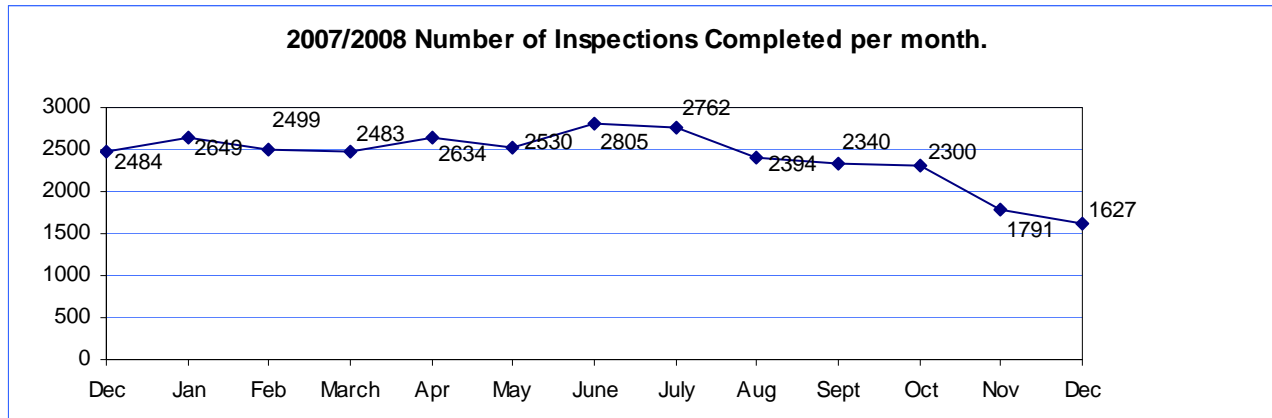


Single Family	Dec 2008	Dec 2007	YTD 2008 Jan/Dec	YTD 2007 Jan/Dec
No. of Custom	20	32	442	588
Valuation	\$ 2,697,040	\$ 6,175,944	\$ 75,447,781	\$ 124,479,491
No. of Base Plans	15	28	597	1348
Valuation	\$ 2,082,395	\$ 4,679,457	\$ 88,014,528	\$ 230,373,911

Permits Issued Year To Date

New Single Family Additions	1039	New Commercial Building	212
Remodels	324	Apartments (# of units)	130
Garages	241	Adult Family Homes	17
Manufactured Homes	380	Townhouses (# of units)	46
Duplex (# of units)	249	Lots Created YTD (from CJ)	1647
	72		

Year to Date Inspection Activity



Building Division Plan review turn around time for “issued” permits*

	Target	Actual
Residential Plan Review	14 days to 1 st review None over 24 days	100% on time Oldest 6 days
Commercial Plan Review	28 days to 1 st review None Over 60 days	95% on time Oldest 49 days

*This on-time report is combining new custom homes, Base Plans, minor remodel in a cumulative report for 1st review times.

