



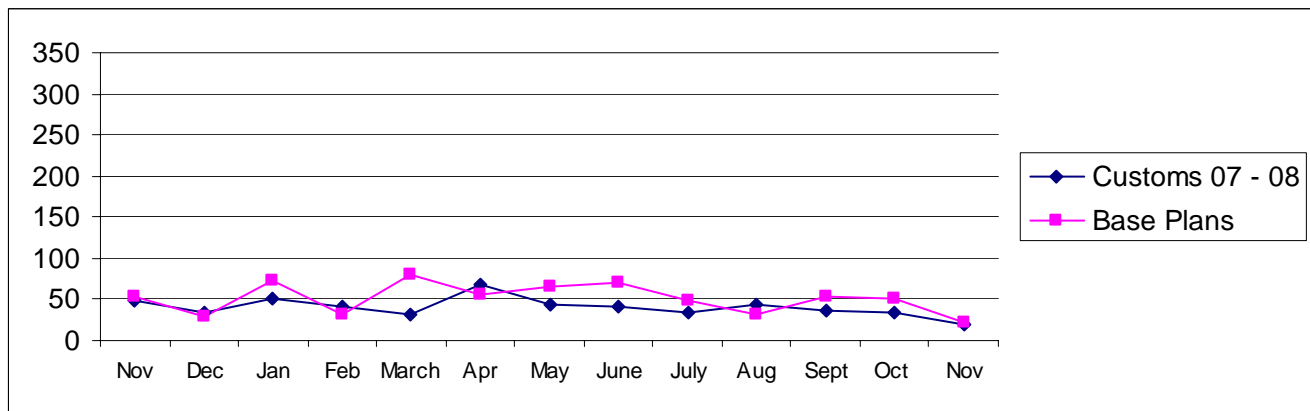
Pierce County

Building Division's Mini-Scorecard November 2008

Gordon L Aleshire, Building Official
253-798-2753 galeshi@co.pierce.wa.us
Sherry Hulin, Supervising Administrative Assistant
253-798-3152 shulin@co.pierce.wa.us

Steve Widener, Building Inspector Supervisor
253-798-7396 swidene@co.pierce.wa.us
Mike Noot, Plans Examiner Supervisor
253-798-7218 mnoot@co.pierce.wa.us

Issued Permits: Comparison of Custom Homes & Base Plans and Townhouse Units

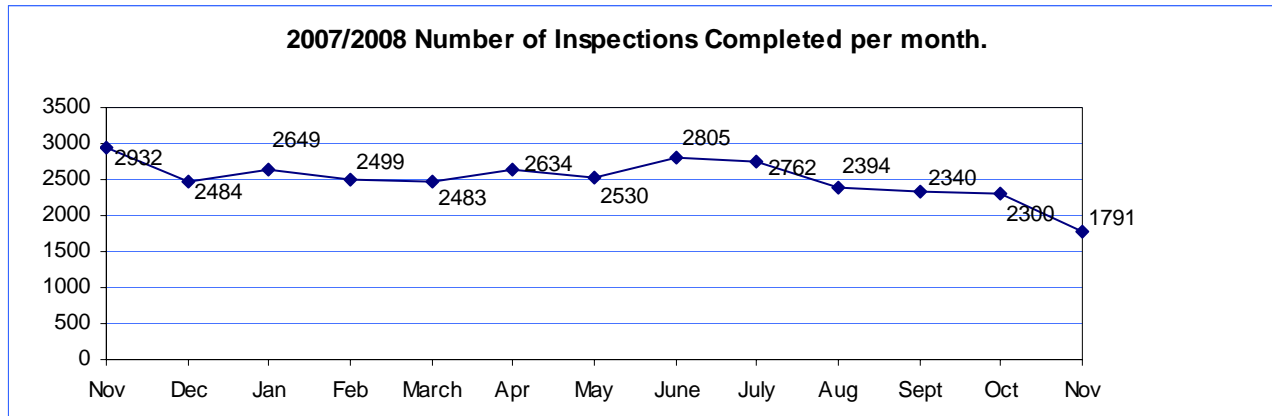


Single Family	Nov 2008	Nov 2007	YTD 2008 Jan/Nov	YTD 2007 Jan/Nov
No. of Custom	19	45	423	562
Valuation	\$ 3,034,549	\$ 10,598,059	\$ 72,954,356	\$ 119,459,737
No. of Base Plans	21	53	582	1320
Valuation	\$ 2,650,801	\$ 8,439,416	\$ 85,927,785	\$ 225,694,453

Permits Issued Year To Date

New Single Family Additions	1005	New Commercial Building	198
Remodels	309	Apartments (# of units)	124
Garages	230	Adult Family Homes	16
Manufactured Homes	362	Townhouses (# of units)	46
Duplex (# of units)	233	Lots Created YTD (from CJ)	1635
	68		

Year to Date Inspection Activity



Building Division Plan review turn around time for “issued” permits*

	Target	Actual
Residential Plan Review	14 days to 1 st review None over 24 days	100% on time Oldest 7 days
Commercial Plan Review	28 days to 1 st review None Over 60 days	100% on time Oldest 7 days

*This on-time report is combining new custom homes, Base Plans, minor remodel in a cumulative report for 1st review times.

