



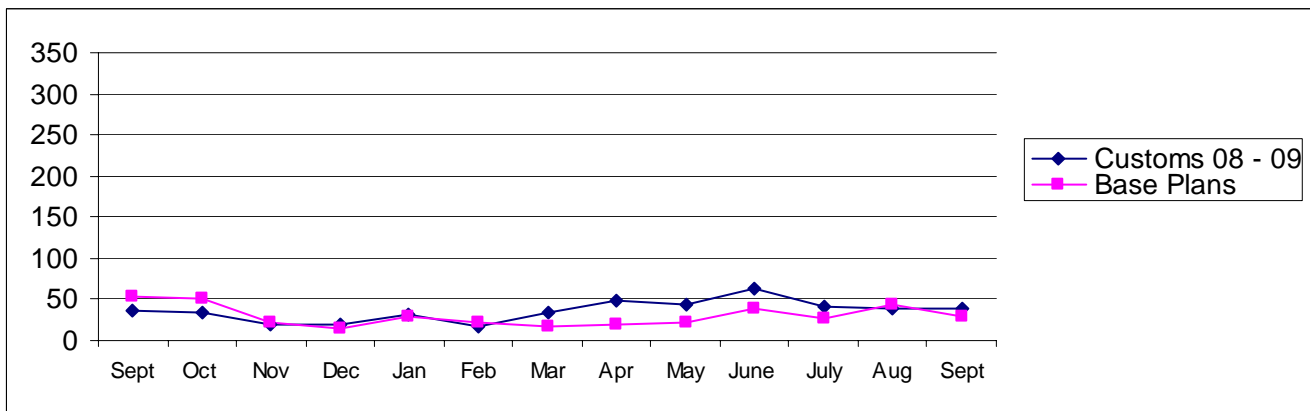
Pierce County

Building Division's Mini-Scorecard September 2009

Gordon L Aleshire, Building Official
253-798-2753 galeshi@co.pierce.wa.us
Sherry Hulin, Supervising Administrative Assistant
253-798-3152 shulin@co.pierce.wa.us

Steve Widener, Building Inspector Supervisor
253-798-7396 swidene@co.pierce.wa.us
Mike Noot, Plans Examiner Supervisor
253-798-7218 mnoot@co.pierce.wa.us

Issued Permits: Comparison of Custom Homes & Base Plans and Townhouse Units



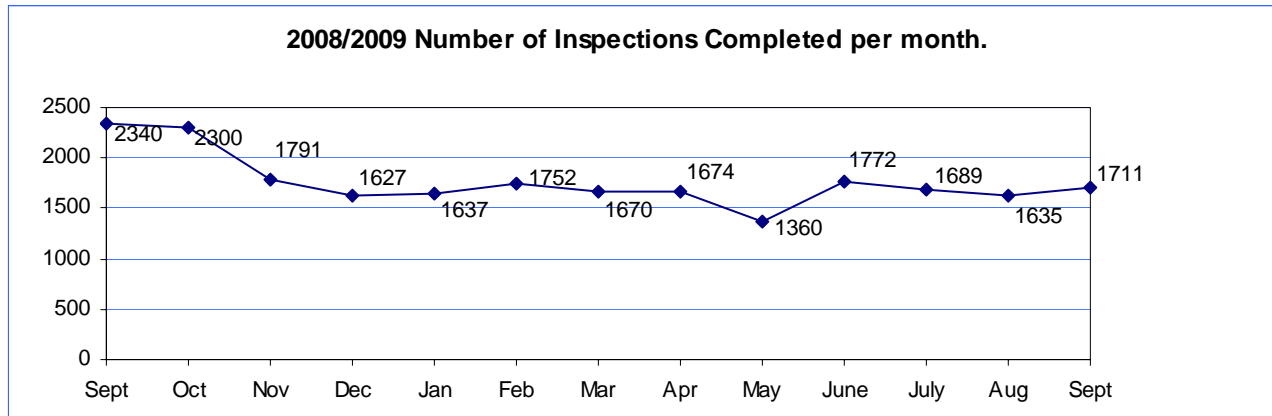
Single Family	Sept 2009	Sept 2008	YTD 2009 Jan/Dec	YTD 2008 Jan/Dec
No. of Custom	40	30	352	350
Valuation	\$ 7,268,509	\$ 4,898,473	\$ 59,750,619	\$ 61,097,169
No. of Base Plans	28	53	252	510
Valuation	\$ 4,444,316	\$ 7,418,340	\$ 43,552,361	\$ 76,670,563

Permits Issued Year To Date

New Single Family Additions	604	New Commercial Building	143
Remodels	258	Apartments (# of units)	93
Garages	152	Adult Family Homes	15
Manufactured Homes	223	Townhouses (# of units)	0
Duplex (# of units)	123	Lots Created YTD (from CJ)	565*
	38		

*Sept not available

Year to Date Inspection Activity



Building Division Plan review turn around time for “issued” permits*

	Target	Actual
Residential Plan Review	14 days to 1 st review None over 24 days	100% on time Oldest 10 days
Commercial Plan Review	28 days to 1 st review None Over 60 days	100% on time Oldest 12 days

*This on-time report is combining new custom homes, Base Plans, minor remodel in a cumulative report for 1st review times.

