



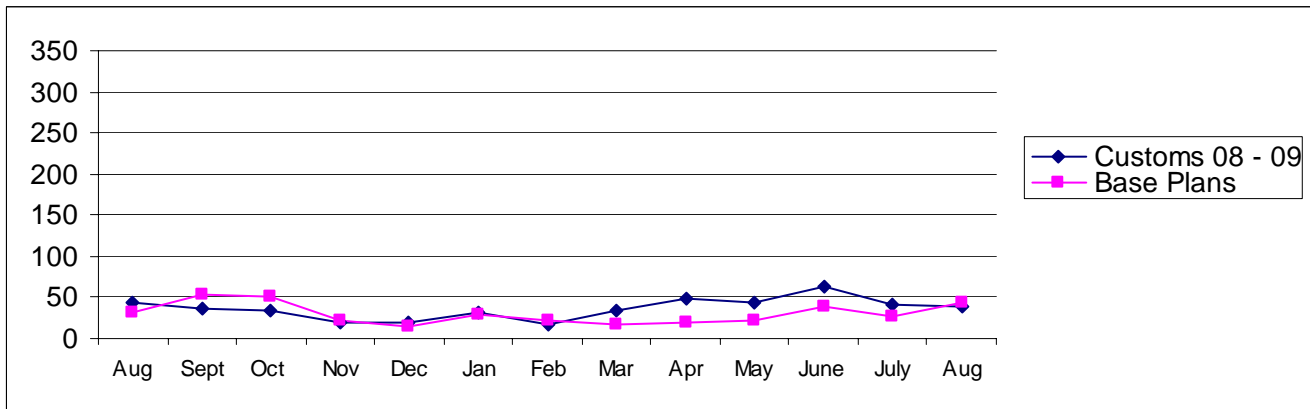
Pierce County

Building Division's Mini-Scorecard August 2009

Gordon L Aleshire, Building Official
253-798-2753 galeshi@co.pierce.wa.us
Sherry Hulin, Supervising Administrative Assistant
253-798-3152 shulin@co.pierce.wa.us

Steve Widener, Building Inspector Supervisor
253-798-7396 swidene@co.pierce.wa.us
Mike Noot, Plans Examiner Supervisor
253-798-7218 mnoot@co.pierce.wa.us

Issued Permits: Comparison of Custom Homes & Base Plans and Townhouse Units

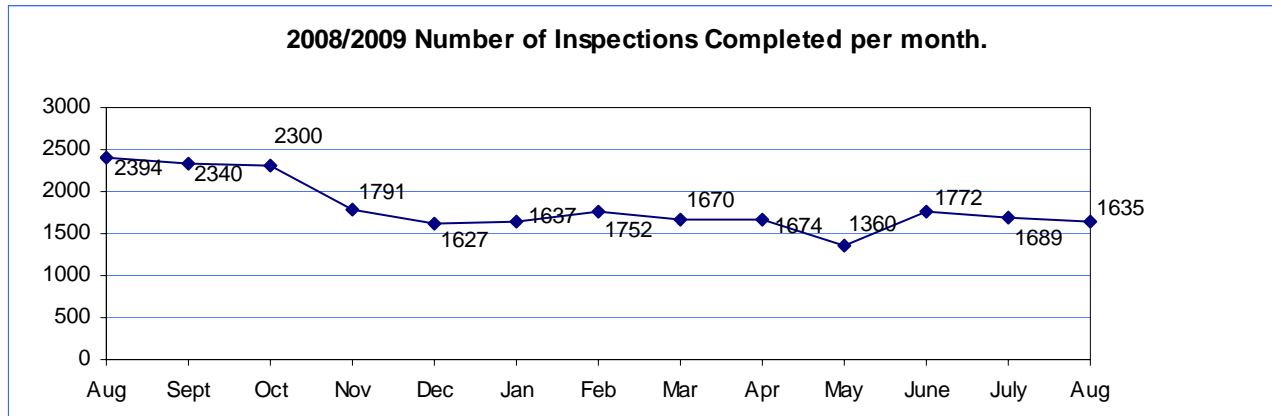


Single Family	Aug 2009	Aug 2008	YTD 2009 Jan/Dec	YTD 2008 Jan/Dec
No. of Custom	40	40	315	321
Valuation	\$ 6,698,534	\$ 6,540,524	\$ 53,030,455	\$ 56,246,275
No. of Base Plans	44	32	224	457
Valuation	\$ 7,551,511	\$ 4,281,177	\$ 39,108,044	\$ 69,252,223

Permits Issued Year To Date

New Single Family Additions	539	New Commercial Building	134
Remodels	234	Apartments (# of units)	93
Garages	139	Adult Family Homes	14
Manufactured Homes	194	Townhouses (# of units)	0
Duplex (# of units)	109	Lots Created YTD (from CJ)	565
	38		

Year to Date Inspection Activity



Building Division Plan review turn around time for “issued” permits*

	Target	Actual
Residential Plan Review	14 days to 1 st review None over 24 days	100% on time Oldest 8 days
Commercial Plan Review	28 days to 1 st review None Over 60 days	95% on time Oldest 33 days

*This on-time report is combining new custom homes, Base Plans, minor remodel in a cumulative report for 1st review times.

