



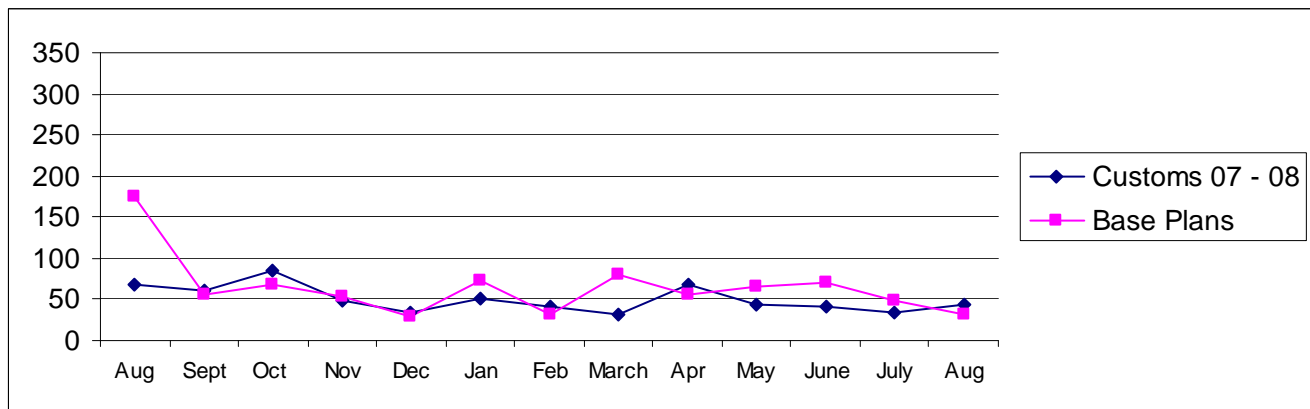
Pierce County

# Building Division's Mini-Scorecard August 2008

Gordon L Aleshire, Building Official  
253-798-2753 [galeshi@co.pierce.wa.us](mailto:galeshi@co.pierce.wa.us)  
Sherry Hulin, Supervising Administrative Assistant  
253-798-3152 [shulin@co.pierce.wa.us](mailto:shulin@co.pierce.wa.us)

Steve Widener, Building Inspector Supervisor  
253-798-7396 [swidene@co.pierce.wa.us](mailto:swidene@co.pierce.wa.us)  
Mike Noot, Plans Examiner Supervisor  
253-798-7218 [mnoot@co.pierce.wa.us](mailto:mnoot@co.pierce.wa.us)

## Issued Permits: Comparison of Custom Homes & Base Plans and Townhouse Units

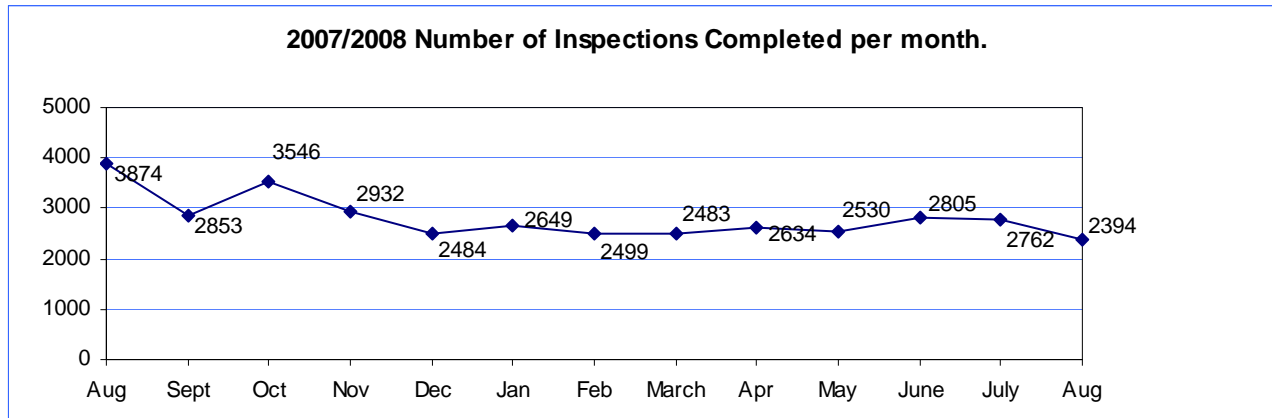


Single Family	Aug 2008	Aug 2007	YTD 2008 Jan/Aug	YTD 2007 Jan/Aug
No. of Custom	43	62	345	442
Valuation	\$ 6,981,857	\$ 14,919,996	\$ 60,130,975	\$ 89,233,424
No. of Base Plans	32	174	457	1143
Valuation	\$ 4,281,177	\$ 33,791,147	\$ 69,247,875	\$ 193,666,120

## Permits Issued Year To Date

New Single Family Additions	802	New Commercial Building	138
Remodels	236	Apartments (# of units)	104
Garages	178	Adult Family Homes	14
Manufactured Homes	285	Townhouses (# of units)	46
Duplex (# of units)	183	Lots Created YTD (from CJ)	1205
	18		

# Year to Date Inspection Activity



## Building Division Plan review turn around time for “issued” permits\*

	Target	Actual
Residential Plan Review	14 days to 1 <sup>st</sup> review None over 24 days	98% on time <b>Oldest 15 days</b>
Commercial Plan Review	28 days to 1 <sup>st</sup> review None Over 60 days	100% on time <b>Oldest 22 days</b>

\*This on-time report is combining new custom homes, Base Plans, minor remodel in a cumulative report for 1<sup>st</sup> review times.

