



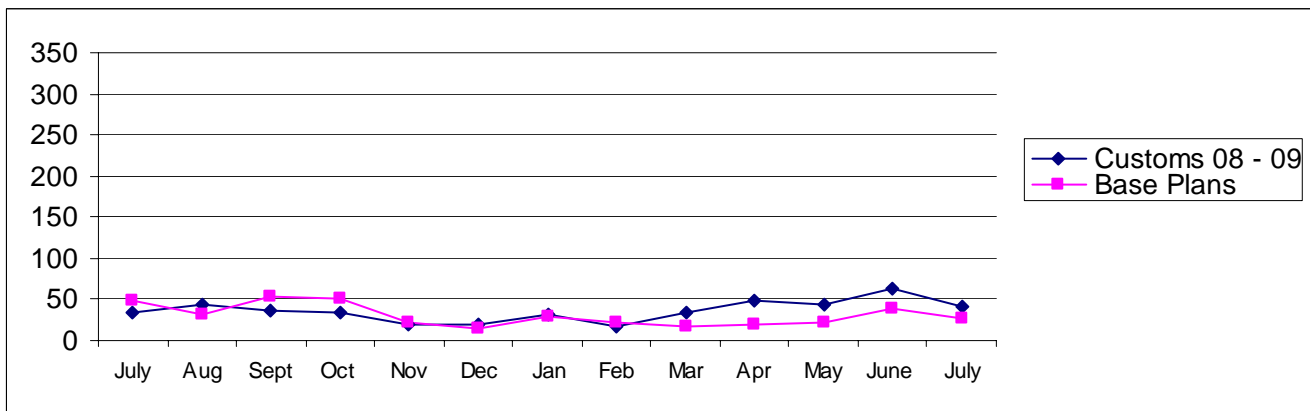
Pierce County

Building Division's Mini-Scorecard July 2009

Gordon L Aleshire, Building Official
253-798-2753 galeshi@co.pierce.wa.us
Sherry Hulin, Supervising Administrative Assistant
253-798-3152 shulin@co.pierce.wa.us

Steve Widener, Building Inspector Supervisor
253-798-7396 swidene@co.pierce.wa.us
Mike Noot, Plans Examiner Supervisor
253-798-7218 mnoot@co.pierce.wa.us

Issued Permits: Comparison of Custom Homes & Base Plans and Townhouse Units



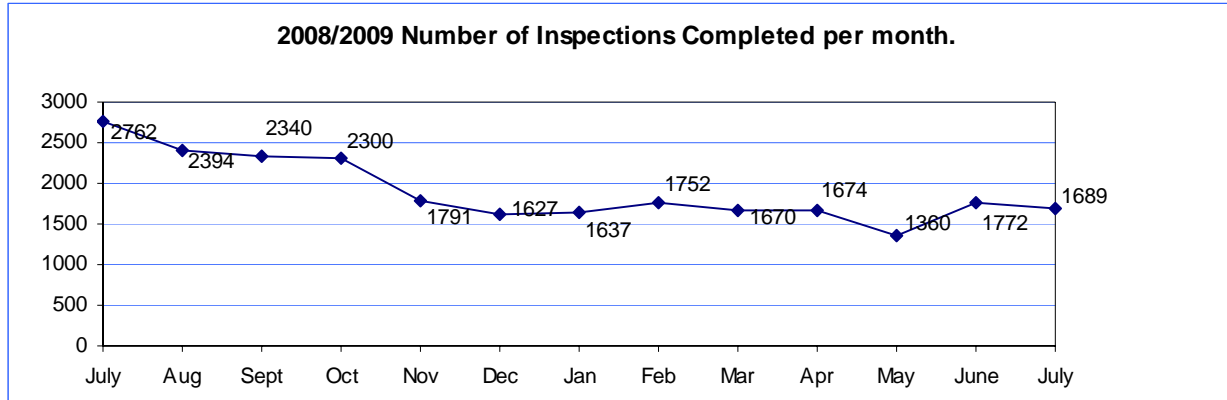
Single Family	July 2009	July 2008	YTD 2009 Jan/Dec	YTD 2008 Jan/Dec
No. of Custom	41	35	275	281
Valuation	\$ 7,545,256	\$ 6,094,719	\$ 46,331,921	\$ 49,705,751
No. of Base Plans	27	48	180	425
Valuation	\$ 5,002,192	\$ 7,599,346	\$ 31,556,533	\$ 64,971,045

Permits Issued Year To Date

New Single Family Additions	455	New Commercial Building	98
Remodels	204	Apartments (# of units)	93
Garages	124	Adult Family Homes	11
Manufactured Homes	169	Townhouses (# of units)	0
Duplex (# of units)	92	Lots Created YTD (from CJ)	452*
	38		

*(amended by Carol Johnson)

Year to Date Inspection Activity



Building Division Plan review turn around time for “issued” permits*

	Target	Actual
Residential Plan Review	14 days to 1 st review None over 24 days	100% on time Oldest 11 days
Commercial Plan Review	28 days to 1 st review None Over 60 days	100% on time Oldest 22 days

*This on-time report is combining new custom homes, Base Plans, minor remodel in a cumulative report for 1st review times.

