



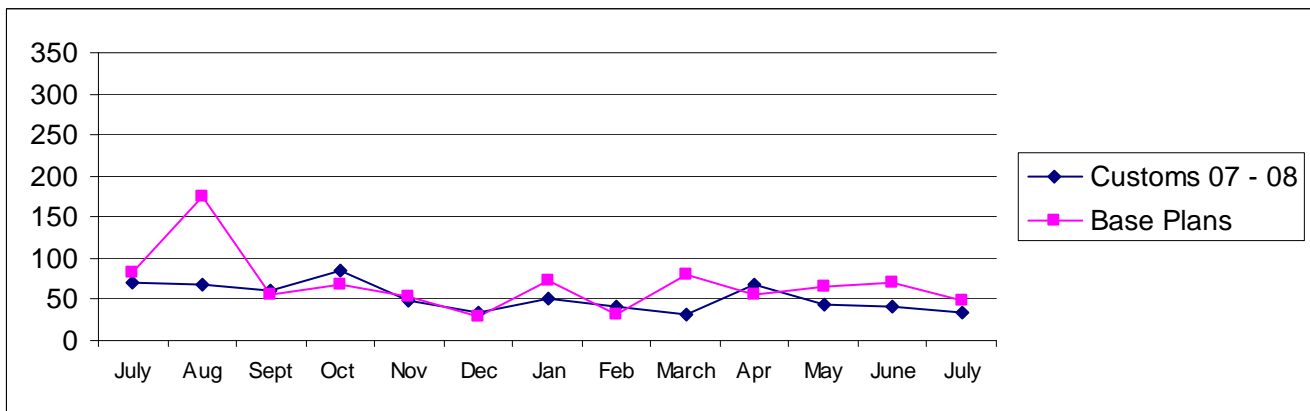
Pierce County

# Building Division's Mini-Scorecard July 2008

Gordon L Aleshire, Building Official  
253-798-2753 [galeshi@co.pierce.wa.us](mailto:galeshi@co.pierce.wa.us)  
Sherry Hulin, Supervising Administrative Assistant  
253-798-3152 [shulin@co.pierce.wa.us](mailto:shulin@co.pierce.wa.us)

Steve Widener, Building Inspector Supervisor  
253-798-7396 [swidene@co.pierce.wa.us](mailto:swidene@co.pierce.wa.us)  
Mike Noot, Plans Examiner Supervisor  
253-798-7218 [mnoot@co.pierce.wa.us](mailto:mnoot@co.pierce.wa.us)

## Issued Permits: Comparison of Custom Homes & Base Plans and Townhouse Units

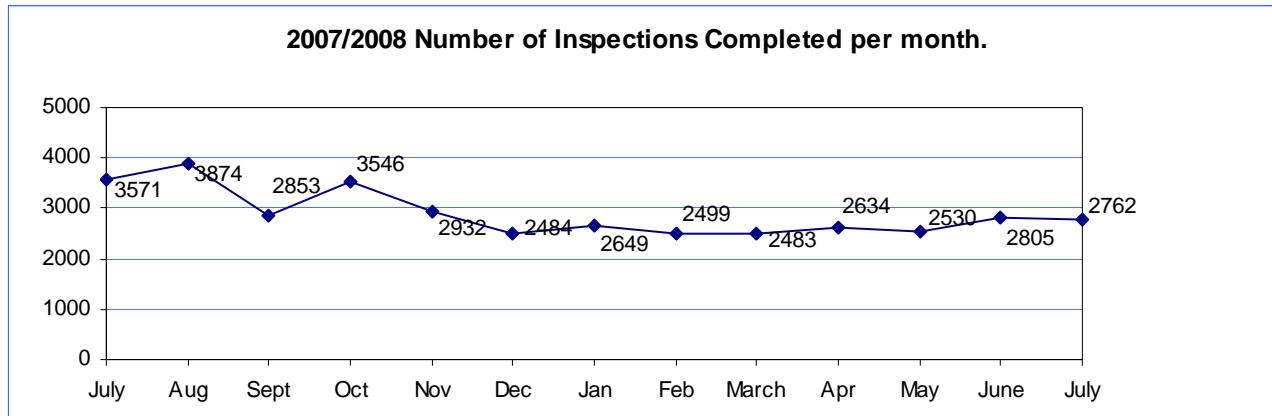


Single Family	July 2008	July 2007	YTD 2008 Jan/July	YTD 2007 Jan/July
No. of Custom	35	64	306	382
Valuation	\$ 6,094,719	\$ 14,064,945	\$ 53,809,850	\$ 74,603,353
No. of Base Plans	48	82	425	969
Valuation	\$ 7,599,346	\$ 17,444,422	\$ 64,966,698	\$ 159,874,972

## Permits Issued Year To Date

New Single Family Additions	731	New Commercial Building	114
Remodels	206	Apartments (# of units)	104
Garages	151	Adult Family Homes	13
Manufactured Homes	250	Townhouses (# of units)	38
Duplex (# of units)	168	Lots Created YTD (from CJ)	1201
	14		

# Year to Date Inspection Activity



## Building Division Plan review turn around time for “issued” permits\*

	Target	Actual
Residential Plan Review	14 days to 1 <sup>st</sup> review None over 24 days	98% on time <b>Oldest 11 days</b>
Commercial Plan Review	28 days to 1 <sup>st</sup> review None Over 60 days	98% on time <b>Oldest 41 days</b>

\*This on-time report is combining new custom homes, Base Plans, minor remodel in a cumulative report for 1<sup>st</sup> review times.

