



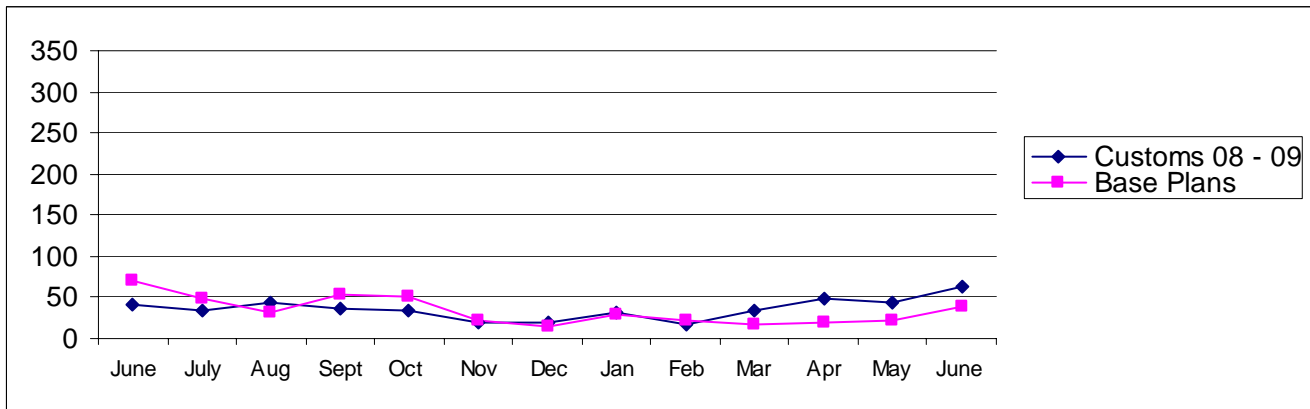
Pierce County

Building Division's Mini-Scorecard June 2009

Gordon L Aleshire, Building Official
253-798-2753 galeshi@co.pierce.wa.us
Sherry Hulin, Supervising Administrative Assistant
253-798-3152 shulin@co.pierce.wa.us

Steve Widener, Building Inspector Supervisor
253-798-7396 swidene@co.pierce.wa.us
Mike Noot, Plans Examiner Supervisor
253-798-7218 mnoot@co.pierce.wa.us

Issued Permits: Comparison of Custom Homes & Base Plans and Townhouse Units

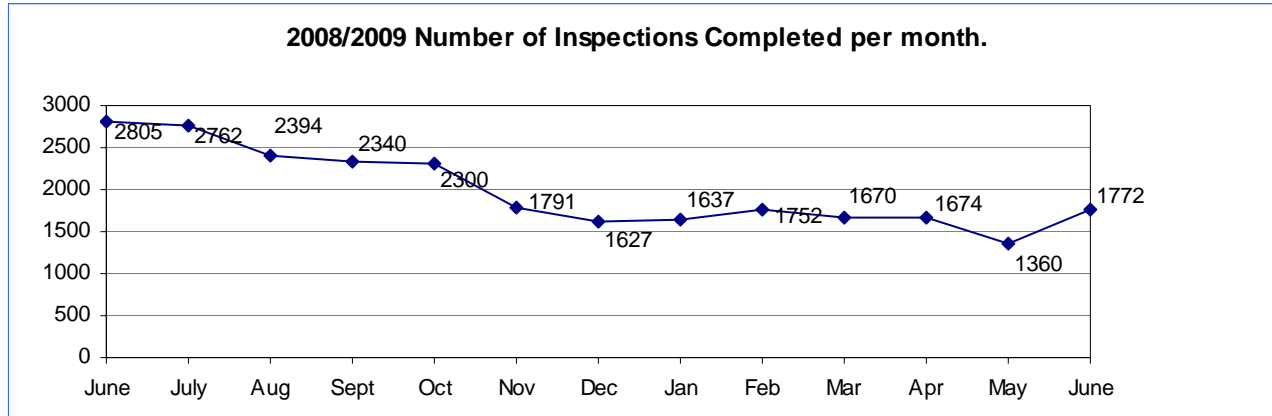


Single Family	June 2009	June 2008	YTD 2009 Jan/Dec	YTD 2008 Jan/Dec
No. of Custom	64	41	236	246
Valuation	\$ 11,260,276	\$ 7,203,192	\$ 39,383,759	\$ 43,611,032
No. of Base Plans	39	70	153	377
Valuation	\$ 6,647,711	\$ 10,454,995	\$ 26,550,252	\$ 57,371,699

Permits Issued Year To Date

New Single Family Additions	389	New Commercial Building	91
Remodels	177	Apartments (# of units)	93
Garages	102	Adult Family Homes	9
Manufactured Homes	143	Townhouses (# of units)	0
Duplex (# of units)	84	Lots Created YTD (from CJ)	554
	38		

Year to Date Inspection Activity



Building Division Plan review turn around time for “issued” permits*

	Target	Actual
Residential Plan Review	14 days to 1 st review None over 24 days	100% on time Oldest 8 days
Commercial Plan Review	28 days to 1 st review None Over 60 days	100% on time Oldest 12 days

*This on-time report is combining new custom homes, Base Plans, minor remodel in a cumulative report for 1st review times.