



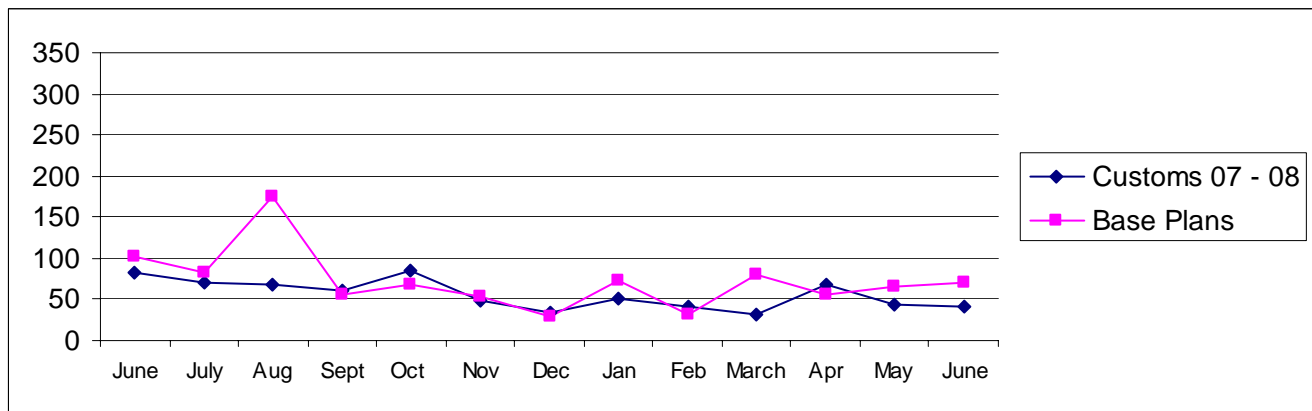
Pierce County

Building Division's Mini-Scorecard June 2008--Revised

Gordon L Aleshire, Building Official
253-798-2753 galeshi@co.pierce.wa.us
Sherry Hulin, Supervising Administrative Assistant
253-798-3152 shulin@co.pierce.wa.us

Steve Widener, Building Inspector Supervisor
253-798-7396 swidene@co.pierce.wa.us
Mike Noot, Plans Examiner Supervisor
253-798-7218 mnoot@co.pierce.wa.us

Issued Permits: Comparison of Custom Homes & Base Plans and Townhouse Units

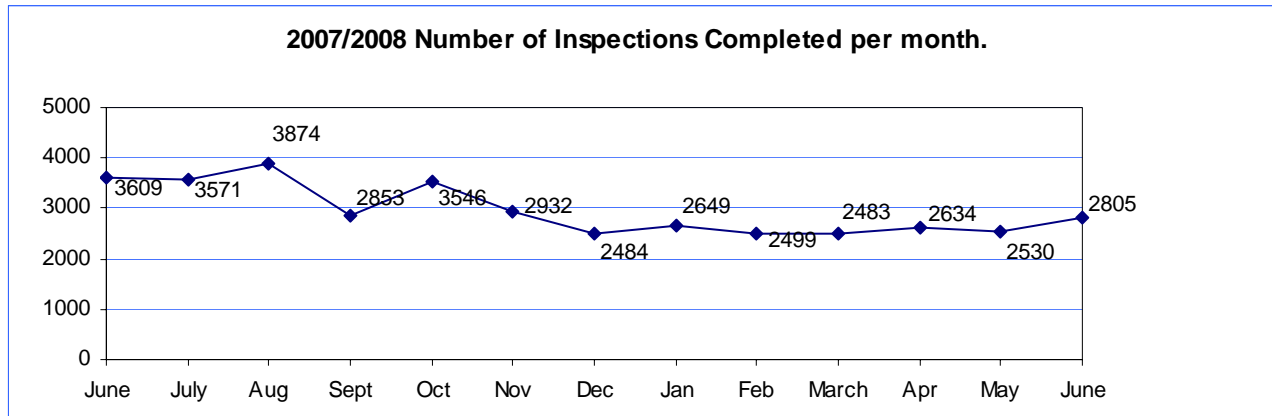


Single Family	June 2008	June 2007	YTD 2008 Jan/June	YTD 2007 Jan/June
No. of Custom	42	73	274	320
Valuation	\$ 7,398,896	\$ 14,441,809	\$ 48,147,576	\$ 60,776,305
No. of Base Plans	70	103	377	887
Valuation	\$ 10,450,648	\$ 21,519,960	\$ 57,367,351	\$ 142,430,550

Permits Issued Year To Date

New Single Family Additions	651	New Commercial Building	97
Remodels	175	Apartments (# of units)	80
Garages	132	Adult Family Homes	11
Manufactured Homes	222	Townhouses (# of units)	38
Duplex (# of units)	140	Lots Created YTD (from CJ)	852
	14		

Year to Date Inspection Activity



Building Division Plan review turn around time for “issued” permits*

	Target	Actual
Residential Plan Review	14 days to 1 st review None over 24 days	100% on time Oldest 7 days
Commercial Plan Review	28 days to 1 st review None Over 60 days	100% on time Oldest 26 days

*This on-time report is combining new custom homes, Base Plans, minor remodel in a cumulative report for 1st review times.

