



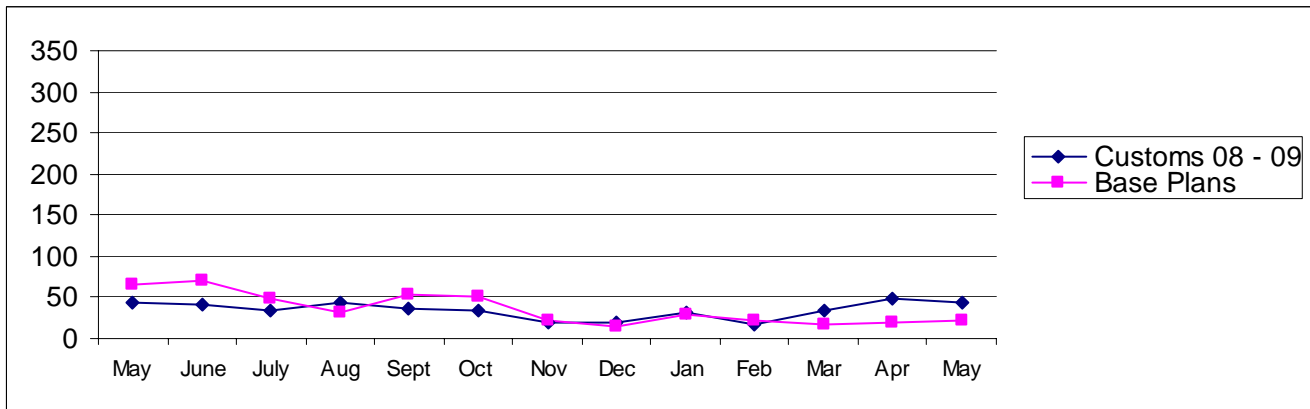
Pierce County

Building Division's Mini-Scorecard May 2009

Gordon L Aleshire, Building Official
253-798-2753 galeshi@co.pierce.wa.us
Sherry Hulin, Supervising Administrative Assistant
253-798-3152 shulin@co.pierce.wa.us

Steve Widener, Building Inspector Supervisor
253-798-7396 swidene@co.pierce.wa.us
Mike Noot, Plans Examiner Supervisor
253-798-7218 mnoot@co.pierce.wa.us

Issued Permits: Comparison of Custom Homes & Base Plans and Townhouse Units

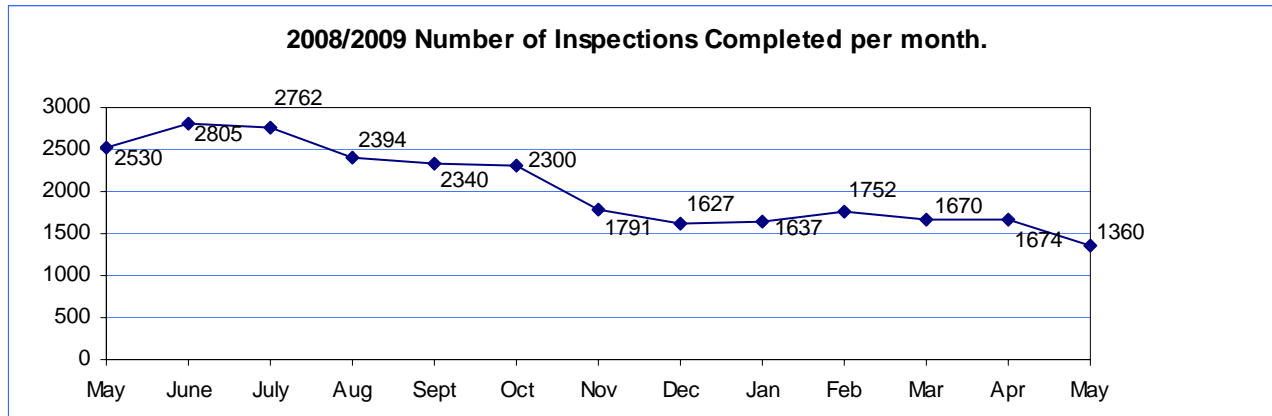


Single Family	May 2009	May 2008	YTD 2009 Jan/Dec	YTD 2008 Jan/Dec
No. of Custom	44	37	173	207
Valuation	\$ 7,499,597	\$ 6,473,370	\$ 28,236,726	\$ 36,888,398
No. of Base Plans	22	65	114	307
Valuation	\$ 3,556,437	\$ 9,417,249	\$ 19,918,583	\$ 46,916,703

Permits Issued Year To Date

New Single Family Additions	287	New Commercial Building	65
Remodels	133	Apartments (# of units)	93
Garages	75	Adult Family Homes	8
Manufactured Homes	104	Townhouses (# of units)	0
Duplex (# of units)	72	Lots Created YTD (from CJ)	348
	36		

Year to Date Inspection Activity



Building Division Plan review turn around time for “issued” permits*

	Target	Actual
Residential Plan Review	14 days to 1 st review None over 24 days	100% on time Oldest 8 days
Commercial Plan Review	28 days to 1 st review None Over 60 days	95% on time Oldest 60 days

*This on-time report is combining new custom homes, Base Plans, minor remodel in a cumulative report for 1st review times.