



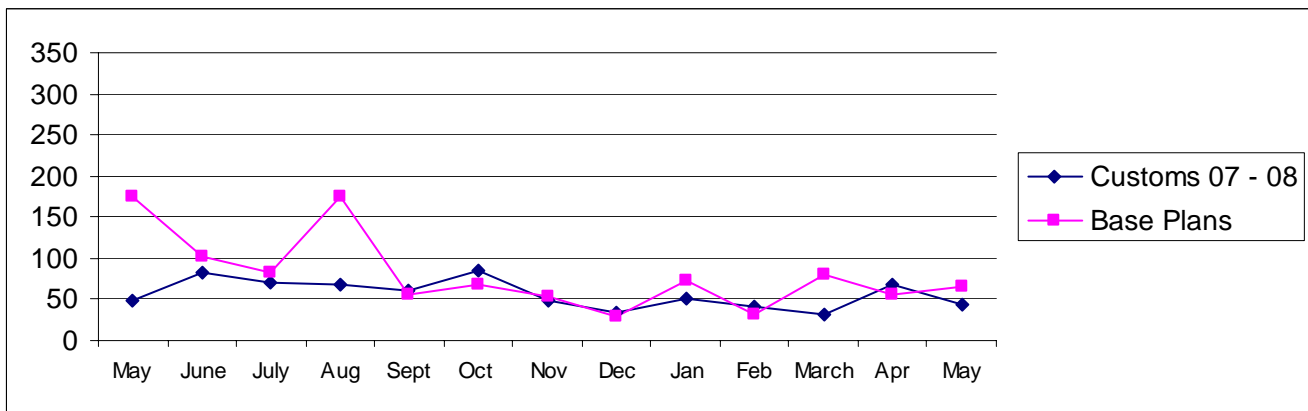
Pierce County

Building Division's Mini-Scorecard May 2008

Gordon L Aleshire, Building Official
253-798-2753 galeshi@co.pierce.wa.us
Sherry Hulin, Supervising Administrative Assistant
253-798-3152 shulin@co.pierce.wa.us

Steve Widener, Building Inspector Supervisor
253-798-7396 swidene@co.pierce.wa.us
Mike Noot, Plans Examiner Supervisor
253-798-7218 mnoot@co.pierce.wa.us

Issued Permits: Comparison of Custom Homes & Base Plans and Townhouse Units

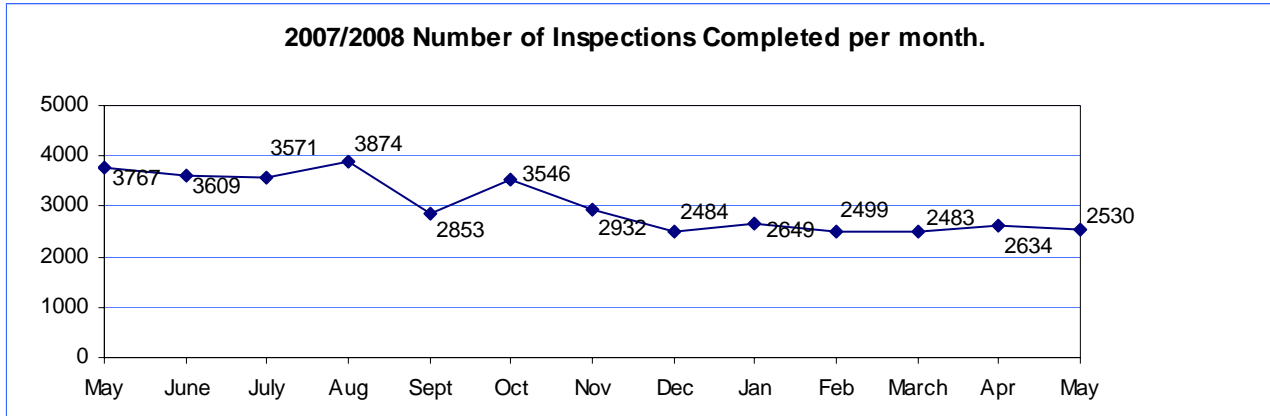


Single Family	May 2008	May 2007	YTD 2008 Jan/May	YTD 2007 Jan/May
No. of Custom	43	54	233	255
Valuation	\$ 7,469,609	\$ 10,036,058	\$ 40,997,102	\$ 47,575,589
No. of Base Plans	65	183	307	784
Valuation	\$ 9,417,249	\$ 28,354,574	\$ 46,916,703	\$ 120,910,589

Permits Issued Year To Date

New Single Family Additions	540	New Commercial Building	87
Remodels	140	Apartments (# of units)	40
Garages	106	Adult Family Homes	9
Manufactured Homes	181	Townhouses (# of units)	38
Duplex (# of units)	115	Lots Created YTD (from CJ)	611
	8		

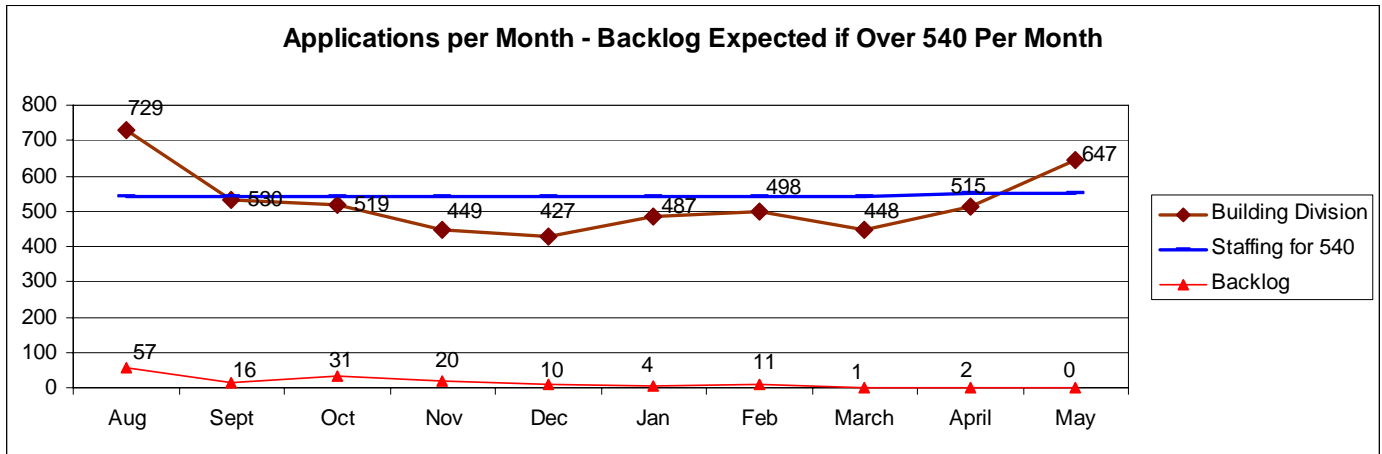
Year to Date Inspection Activity



Building Division Plan review turn around time for “issued” permits*

	Target	Actual
Residential Plan Review	14 days to 1 st review None over 24 days	100% on time Oldest 14 days
Commercial Plan Review	28 days to 1 st review None Over 60 days	100% on time Oldest 16 days

*This on-time report is combining new custom homes, Base Plans, minor remodel in a cumulative report for 1st review times.



This graph is designed to show the relationship of new applications per month and backlog. The backlog and new application data are combined residential and commercial. Commercial and residential have different service levels with commercial set at 28 days to first review, custom homes at 14 days, and Base Plans at 3 days.

This accounts for some of the apparent lack of correlation between the two sets of data. The break point line represents the volume of incoming applications a full staff of 12 plans examiners should be able to keep up with. We currently have 10 plans examiners.