



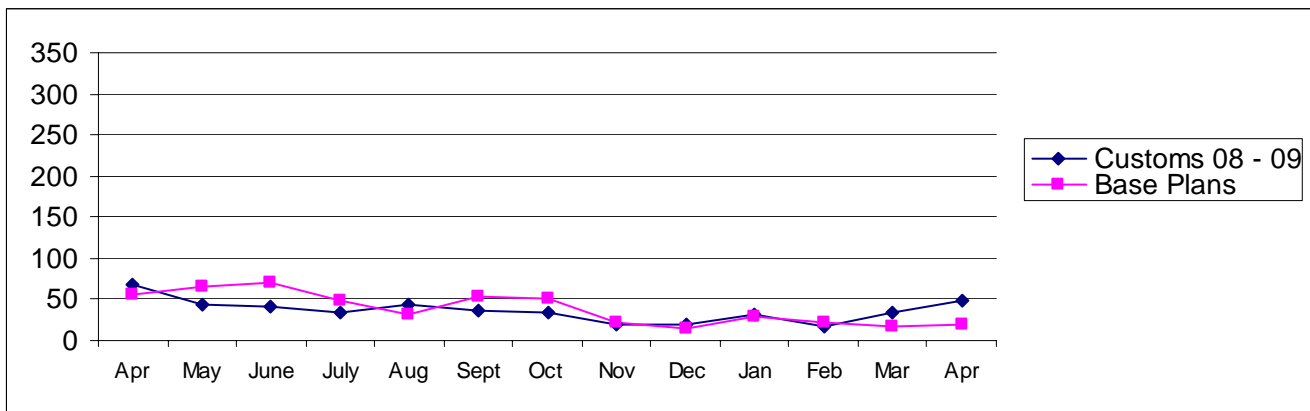
Pierce County

Building Division's Mini-Scorecard April 2009

Gordon L Aleshire, Building Official
253-798-2753 galeshi@co.pierce.wa.us
Sherry Hulin, Supervising Administrative Assistant
253-798-3152 shulin@co.pierce.wa.us

Steve Widener, Building Inspector Supervisor
253-798-7396 swidene@co.pierce.wa.us
Mike Noot, Plans Examiner Supervisor
253-798-7218 mnoot@co.pierce.wa.us

Issued Permits: Comparison of Custom Homes & Base Plans and Townhouse Units

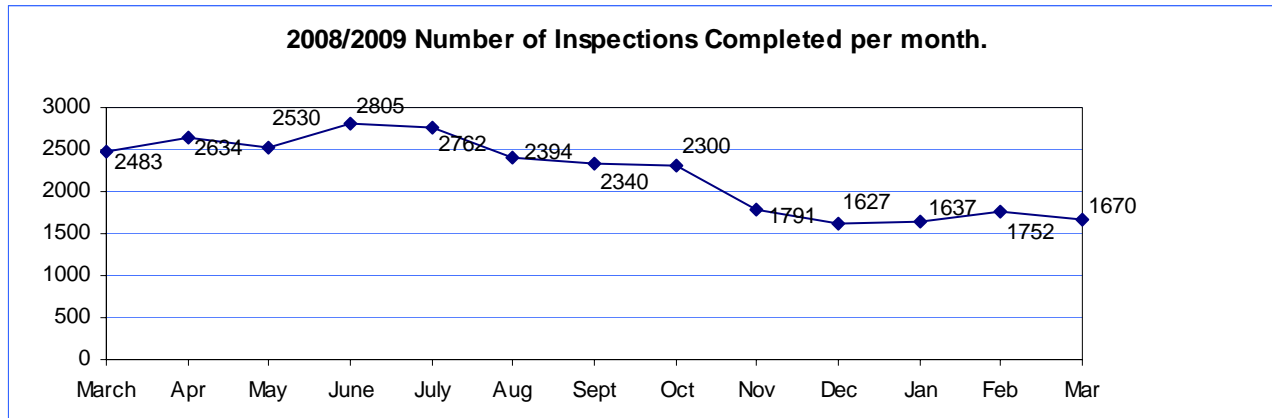


Single Family	Apr 2009	Apr 2008	YTD 2009 Jan/Dec	YTD 2008 Jan/Dec
No. of Custom	48	60	130	170
Valuation	\$ 8,276,177	\$ 11,410,183	\$ 20,876,196	\$ 30,415,029
No. of Base Plans	20	57	92	242
Valuation	\$ 3,944,489	\$ 8,982,794	\$ 16,362,146	\$ 37,499,453

Permits Issued Year To Date

New Single Family Additions	222	New Commercial Building	55
Remodels	102	Apartments (# of units)	93
Garages	64	Adult Family Homes	6
Manufactured Homes	84	Townhouses (# of units)	0
Duplex (# of units)	60	Lots Created YTD (from CJ)	81
	34		

Year to Date Inspection Activity



Building Division Plan review turn around time for “issued” permits*

	Target	Actual
Residential Plan Review	14 days to 1 st review None over 24 days	100% on time Oldest 5 days
Commercial Plan Review	28 days to 1 st review None Over 60 days	95% on time Oldest 55 days

*This on-time report is combining new custom homes, Base Plans, minor remodel in a cumulative report for 1st review times.

