



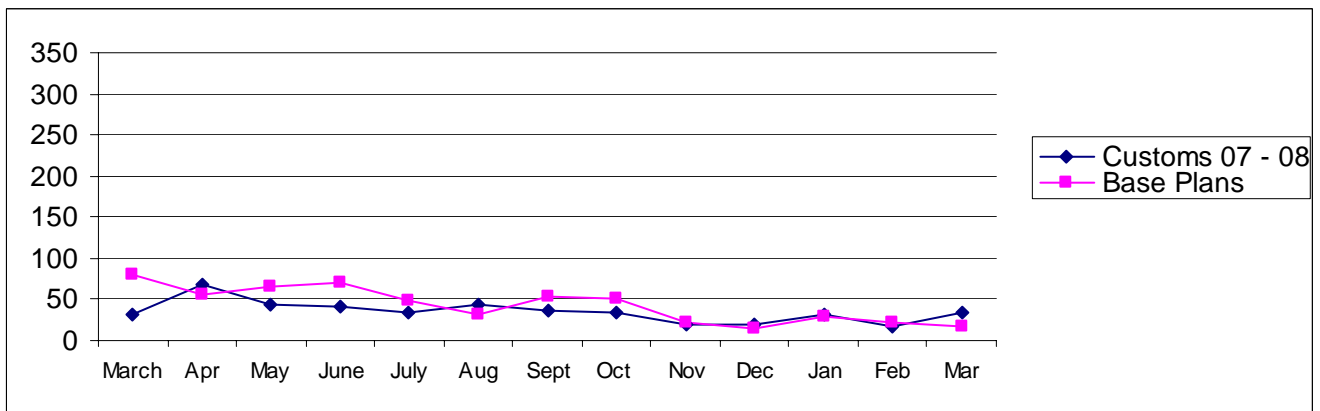
Pierce County

Building Division's Mini-Scorecard March 2009

Gordon L Aleshire, Building Official
253-798-2753 galeshi@co.pierce.wa.us
Sherry Hulin, Supervising Administrative Assistant
253-798-3152 shulin@co.pierce.wa.us

Steve Widener, Building Inspector Supervisor
253-798-7396 swidene@co.pierce.wa.us
Mike Noot, Plans Examiner Supervisor
253-798-7218 mnoot@co.pierce.wa.us

Issued Permits: Comparison of Custom Homes & Base Plans and Townhouse Units

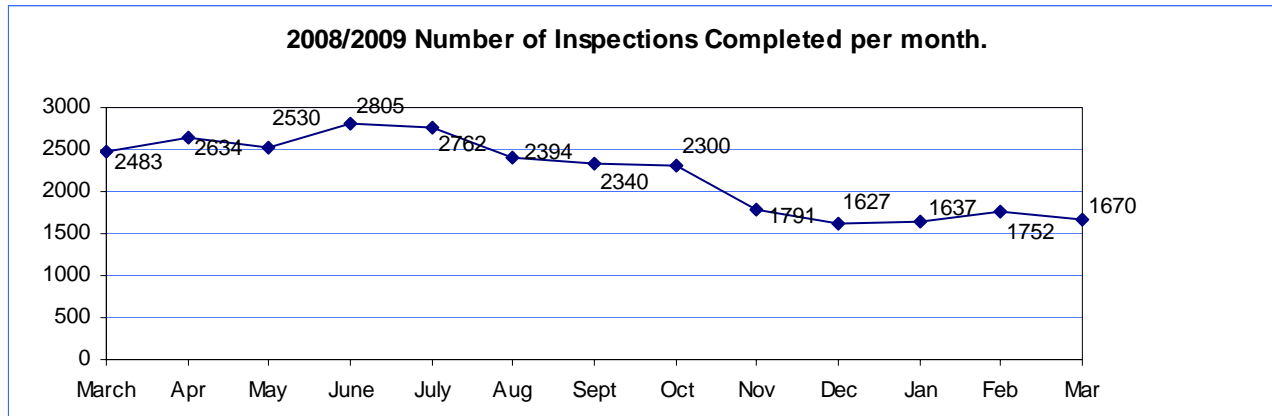


Single Family	Mar 2009	Mar 2008	YTD 2009 Jan/Dec	YTD 2008 Jan/Dec
No. of Custom	34	28	82	111
Valuation	\$ 5,324,709	\$ 4,434,540	\$ 12,600,019	\$ 19,237,008
No. of Base Plans	17	80	72	185
Valuation	\$ 2,605,801	\$ 13,252,008	\$ 12,417,656	\$ 28,516,659

Permits Issued Year To Date

New Single Family Additions	154	New Commercial Building	43
Remodels	73	Apartments (# of units)	93
Garages	42	Adult Family Homes	5
Manufactured Homes	62	Townhouses (# of units)	0
Duplex (# of units)	50	Lots Created YTD (from CJ)	n/a
	22		

Year to Date Inspection Activity



Building Division Plan review turn around time for “issued” permits*

	Target	Actual
Residential Plan Review	14 days to 1 st review None over 24 days	100% on time Oldest 6 days
Commercial Plan Review	28 days to 1 st review None Over 60 days	100% on time Oldest 13 days

*This on-time report is combining new custom homes, Base Plans, minor remodel in a cumulative report for 1st review times.

