



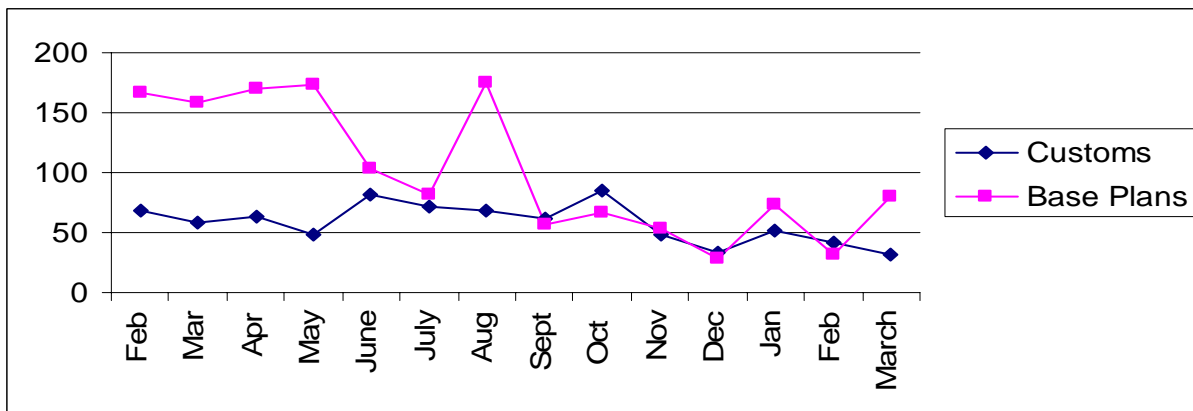
Pierce County

# Building Division's Mini-Scorecard March 2008

Gordon L Aleshire, Building Official  
253-798-2753 [galeshi@co.pierce.wa.us](mailto:galeshi@co.pierce.wa.us)  
Sherry Hulin, Supervising Administrative Assistant  
253-798-3152 [shulin@co.pierce.wa.us](mailto:shulin@co.pierce.wa.us)

Steve Widener, Building Inspector Supervisor  
253-798-7396 [swidene@co.pierce.wa.us](mailto:swidene@co.pierce.wa.us)  
Mike Noot, Plans Examiner Supervisor  
253-798-7218 [mnoot@co.pierce.wa.us](mailto:mnoot@co.pierce.wa.us)

## Issued Permits: Comparison of Custom Homes & Base Plans and Townhouse Units

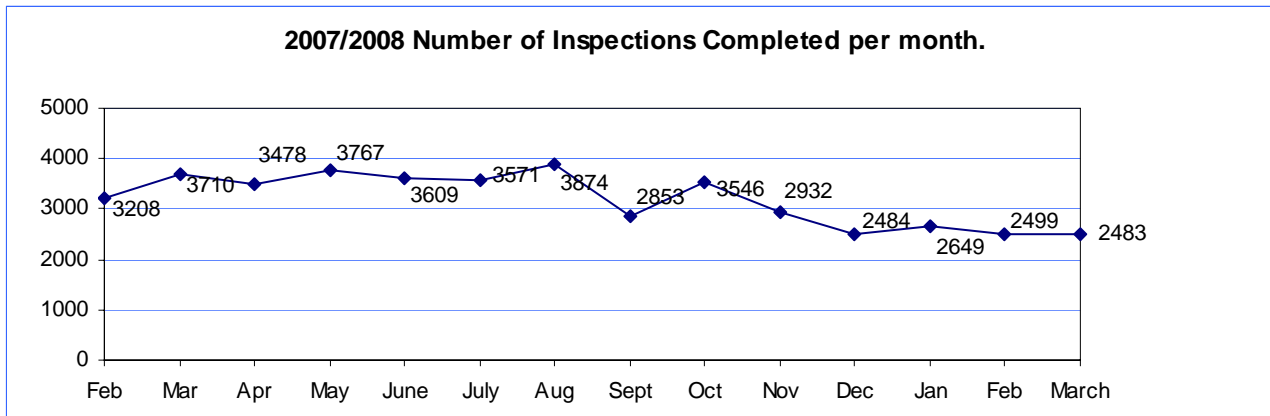


Single Family	Mar 2008	Mar 2007	YTD 2008 Jan/Mar	YTD 2007 Jan/Mar
No. of Custom	32	58	125	102
Valuation	\$ 5,229,790	\$ 6,687,452	\$ 21,595,843	\$ 21,875,194
No. of Base Plans	80	165	185	273
Valuation	\$ 13,252,008	\$ 25,436,418	\$ 28,516,659	\$ 69,307,094

## Permits Issued Year To Date

New Single Family Additions	309	New Commercial Building	32
Remodels	75	Apartments (# of units)	16
Garages	51	Adult Family Homes	4
Manufactured Homes	100	Townhouses (# of units)	24
Duplex (# of units)	66	Lots Created YTD (from CJ)	277
	6		

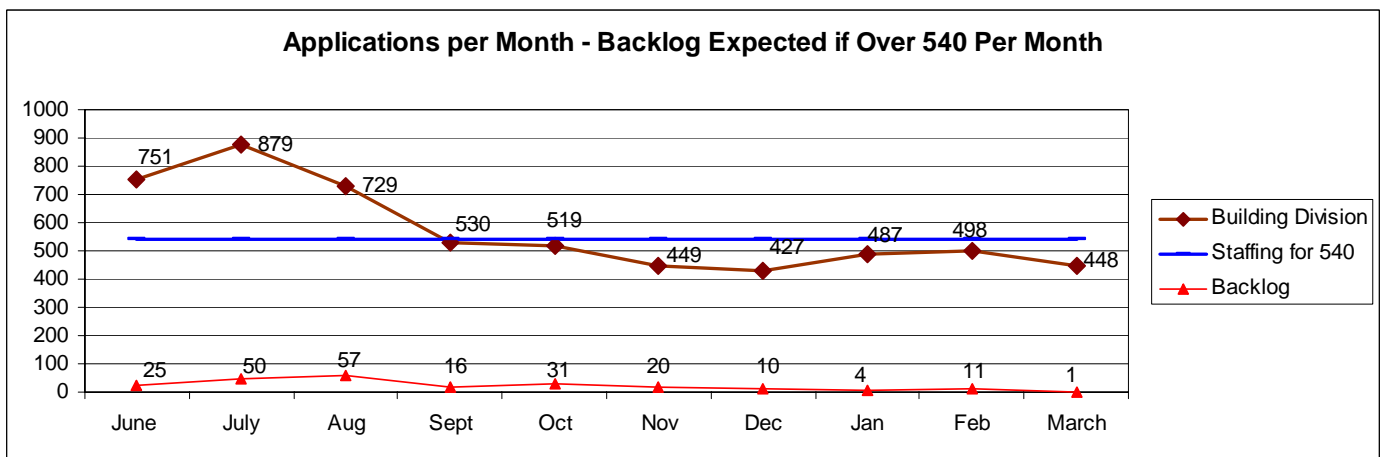
# Year to Date Inspection Activity



## Building Division Plan review turn around time for “issued” permits\*

	Target	Actual
Residential Plan Review	14 days to 1 <sup>st</sup> review None over 24 days	99% on time <b>Oldest 32 days</b>
Commercial Plan Review	28 days to 1 <sup>st</sup> review None Over 60 days	100% on time <b>Oldest 28 days</b>

\*This on-time report is combining new custom homes, Base Plans, minor remodel in a cumulative report.



This graph is designed to show the relationship of new applications per month and backlog. The backlog and new application data are combined residential and commercial. Commercial and residential have different service levels with commercial set at 28 days to first review, custom homes at 14 days, and Base Plans at 3 days.

This accounts for some of the apparent lack of correlation between the two sets of data. The break point line represents the volume of incoming applications a full staff of 12 plans examiners should be able to keep up with. We currently have 10 plans examiners.