



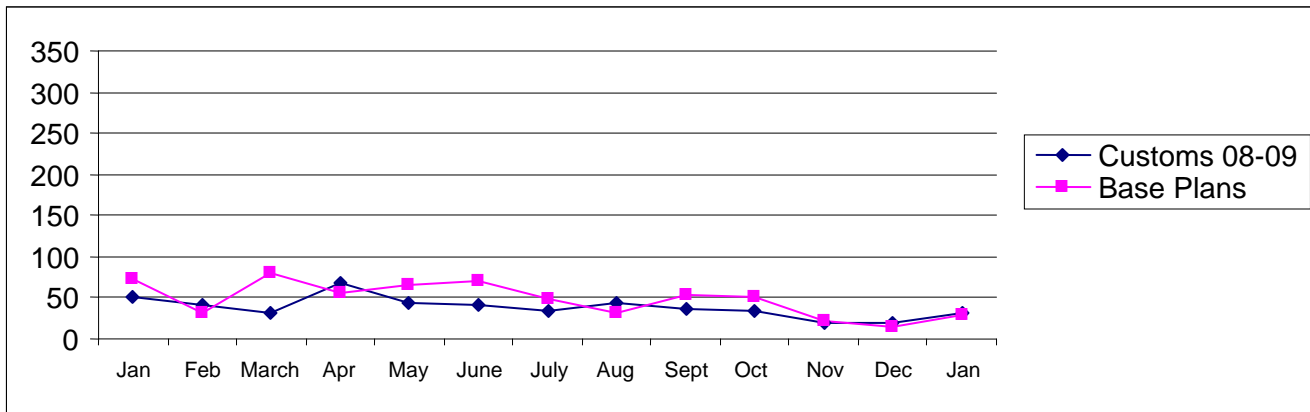
Pierce County

Building Division's Mini-Scorecard January 2009

Gordon L Aleshire, Building Official
253-798-2753 galeshi@co.pierce.wa.us
Sherry Hulin, Supervising Administrative Assistant
253-798-3152 shulin@co.pierce.wa.us

Steve Widener, Building Inspector Supervisor
253-798-7396 swidene@co.pierce.wa.us
Mike Noot, Plans Examiner Supervisor
253-798-7218 mnoot@co.pierce.wa.us

Issued Permits: Comparison of Custom Homes & Base Plans and Townhouse Units

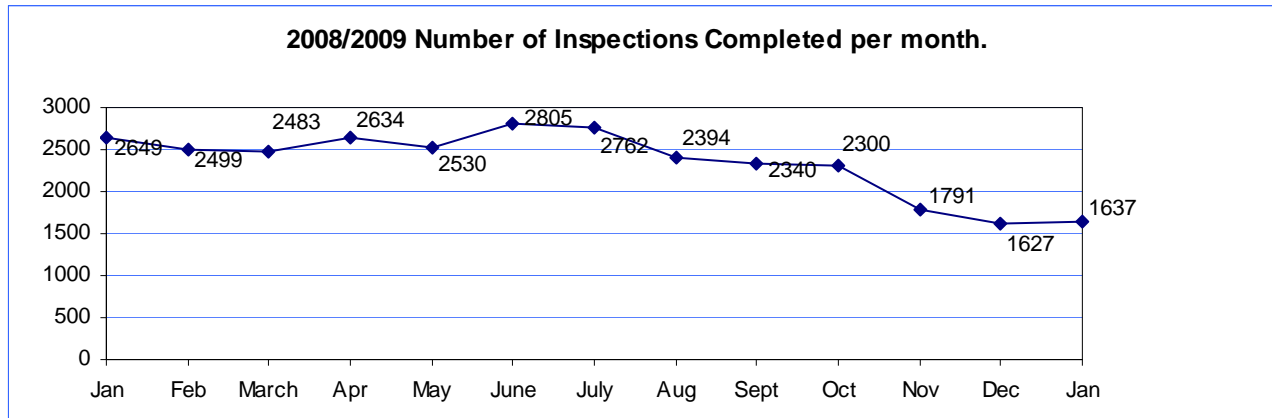


Single Family	Jan 2009	Jan 2008	YTD 2009 Jan/Dec	YTD 2008 Jan/Dec
No. of Custom	30	48	30	48
Valuation	\$ 4,462,338	\$ 8,120,838	\$ 4,462,338	\$ 8,120,838
No. of Base Plans	32	73	32	73
Valuation	\$ 5,602,795	\$ 10,455,437	\$ 5,602,795	\$ 10,455,437

Permits Issued Year To Date

New Single Family Additions	62	New Commercial Building	16
Remodels	27	Apartments (# of units)	93
Garages	15	Adult Family Homes	1
Manufactured Homes	20	Townhouses (# of units)	0
Duplex (# of units)	13	Lots Created YTD (from CJ)	35
	12		

Year to Date Inspection Activity



Building Division Plan review turn around time for “issued” permits*

	Target	Actual
Residential Plan Review	14 days to 1 st review None over 24 days	100% on time Oldest 5 days
Commercial Plan Review	28 days to 1 st review None Over 60 days	100% on time Oldest 17 days

*This on-time report is combining new custom homes, Base Plans, minor remodel in a cumulative report for 1st review times.

